

## **Historic, Archive Document**

Do not assume content reflects current scientific knowledge, policies, or practices.



LIBRARY  
RECEIVED  
★ FEB 15 1932 ★  
U. S. Department of Agriculture



*Nineteen-thirty-two  
Gardens*

Vegetable Seed Trials

FEB 10 1932





*I*N this, our catalogue for the year 1932, which we present for your approval, you will find listed a complete assortment of Flower and Vegetable Seeds. Also in our store, pictured above, you will find a complete line of Horticultural sundries. Some are listed on the following pages and many are not. Just remember—if it's for the garden, we have it.

We would like to call your attention to our Cut Flower Department. Here you may buy floral decorations for any purpose, from a buttonhole to a banquet. We also make up funeral designs.

The next time you need flowers try us. You will find our service unexcelled and our prices fair.

# INDEX

## VEGETABLE AND FARM SEEDS

	Page
Artichoke.....	4
Asparagus.....	4
Beans.....	4, 5, 6
Beets.....	6, 7
Bird Seeds.....	35
Borecole.....	10
Broccoli.....	6
Brussels Sprouts.....	4
Cabbage.....	3, 7
Cardoon.....	8
Carrots.....	8
Cauliflower.....	6, 7
Celery.....	8
Chard, Swiss.....	7
Chervil.....	8
Chicory.....	8
Citron.....	12
Clovers.....	19
Collards.....	8
Corn.....	3, 9
Corn Salad.....	10
Cress.....	8
Cucumber.....	10
Dandelion.....	10
Dill.....	10
Eggplant.....	10
Endive.....	10
Escarole.....	10
Farm Seeds.....	20
Fennel.....	10
Field Seeds.....	19
Grass Seed.....	20
Gumbo.....	12
Herbs, Medicinal.....	13
Kale.....	10
Kohlrabi.....	10
Lawn Grass Seeds.....	19
Leek.....	11
Lettuce.....	11
Millet.....	20
Mushrooms.....	11
Muskmelon.....	3, 12
Mustard.....	12
Okra.....	12
Onion Seed.....	13
Onion Sets.....	13
Parsley.....	13
Parsnip.....	13
Peas.....	14, 15
Pepper.....	3, 14
Potatoes.....	15
Pumpkin.....	15
Radish.....	15
Rutabaga.....	18
Salsify.....	15
Spinach.....	16
Squash.....	16
Swiss Chard.....	7
Tomatoes.....	17
Turnips.....	18
Watermelon.....	12

## FLOWER SEEDS

Achillea.....	31
Aconitum.....	31
African Daisy.....	21, 24
Ageratum.....	21
Agrostemma.....	31
Alyssum.....	21, 31
Amaranthus.....	21
Anchusa.....	21, 31
Anthemis.....	31
Antirrhinum.....	21
Aquilegia.....	3, 31
Arabis.....	31
Arctotis.....	21
Asters.....	22, 31
Aubrietia.....	31
Babysbreath.....	25

	Page
Balsam.....	22
Baptisia.....	31
Begonia.....	22
Bellis.....	31
Blue Lace Flower.....	24
Brachycome.....	23
Browallia.....	23
Butterflyflower.....	27
Calendula.....	3, 23
California Poppy.....	24
Calliopsis.....	23
Campanula.....	31
Candytuft.....	23, 31
Carnation.....	24
Castor-bean.....	26
Celosia.....	24
Centaurea.....	23, 24, 31
Cerastium.....	31
Chinese Lantern Plant.....	31
Chrysanthemum, Annual.....	24
Clarkia.....	24
Coneflower.....	31
Convolvulus.....	24
Coralbells.....	31
Coreopsis.....	31
Cornflower, Hardy.....	31
Cosmos.....	24
Cowslip.....	31
Cup-and-saucer.....	31
Dahlia.....	24
Daisy.....	31
Delphinium.....	31
Dianthus.....	24, 31
Didiscus.....	24
Digitalis.....	31
Dimorphotheca.....	24
Eschscholtzia.....	24
Eupatorium.....	31
Euphorbia.....	25
False-indigo.....	31
Forget-me-not.....	25
Four-o'clock.....	25
Foxglove.....	31
Gaillardia.....	25, 31
Geum.....	31
Gladiolus.....	29
Godetia.....	25
Gourds, Ornamental.....	25
Gypsophila.....	25, 31
Helenium.....	31
Helianthemum.....	31
Helichrysum.....	25
Heliotrope.....	25, 31
Heuchera.....	31
Hibiscus.....	31
Hollyhock.....	25, 31
Honesty.....	25
Iberis.....	31
Jacobs-ladder, Blue.....	31
Kochia.....	25
Larkspur.....	25
Linum.....	31
Lobelia.....	25
Lunaria.....	25
Lupine, Annual.....	25
Lupinus.....	31
Lychnis.....	31
Marigold.....	25
Marshmallow.....	31
Marvel of Peru.....	25
Mignonette.....	25
Mirabilis.....	31
Monkshood.....	25
Morning-glory.....	24
Mourning Bride.....	27
Myosotis.....	25
Nasturtiums.....	25
Nemesia.....	25
Nicotiana.....	26
Nigella.....	26

Pansy.....	3, 26
Pennisetum.....	26
Pentstemon.....	31
Petunia.....	26
Phlox.....	26
Physalis.....	31
Pink.....	31
Platycodon.....	31
Polemonium.....	31
Polyanthus.....	31
Poppy.....	26, 31
Portulaca.....	26
Pot-marigold.....	23
Primrose, English.....	31
Primula.....	31
Pyrethrum.....	31
Ricinus.....	26
Rockrose.....	31
Rudbeckia.....	31
Sage, Flowering.....	26
Salpiglossis.....	26
Salvia.....	26, 31
Sanvitalia.....	27
Scabiosa.....	27
Schizanthus.....	27
Snapdragon.....	21
Statice.....	27
Strawflower.....	25
Stock.....	27
Stokesia.....	31
Sunflower.....	27
Swan-river-daisy.....	23
Sweet Peas.....	28
Sweet-william.....	31
Torenia.....	27
Tuberose.....	28
Tunica.....	31
Valerian.....	31
Verbena.....	27
Veronica.....	31
Zinnia.....	28

## TOOLS AND GARDEN SUPPLIES

Canes, Bamboo.....	33
Cultivators.....	32
Dusters.....	32, 33
Edgers, Turf.....	32
Florists' Flats.....	33
Flower Pots and Pans.....	33
Garden Barrow.....	33
Garden Stakes.....	33
Garden Vases.....	33
Grass Hooks.....	32
Hoes.....	32
Hose, Rubber Garden.....	33
Hotbed Mats.....	33
Labels.....	33
Lawn Mowers.....	32
Plant Tubs.....	33
Pottery Pans and Vases.....	33
Pruners.....	32, 33
Pruning Saws.....	33
Raffia.....	32
Rakes.....	32
Scythe Blades.....	32
Shears.....	32
Shovels.....	32
Spades.....	32
Spading Forks.....	32
Sprayers.....	32
Twine.....	33
Watering Pots.....	33

## MISCELLANEOUS

Bird and Pet Supplies.....	33, 35
Bird Baths.....	33
Fertilizers and Plant Foods.....	35, 36
Fish Supplies.....	35
Insecticides, Fungicides.....	33, 34

# VEGETABLE AND FLOWER SPECIALTIES

---

## SWEET CORN

**SPANISH GOLD.** An early Sweet Corn. Spanish Gold, the first crossed Sweet Corn produced by the Station for market gardeners, matured several days ahead of any other Sweet Corn in the trials at Windsor and it ripened before other kinds in tests conducted by farmers in various parts of the State. Comparisons were made with Extra Early Golden Bantam, Golden Sunshine, Golden Market and seven other varieties. The new cross appeared plump, rich and yellow early in the season.

**GOLDEN HUMMER.** The largest and earliest of the Yellow Sweet Corns. Our trials show it to be six days earlier than the Golden Sunshine and the ears fully an inch longer and is a twelve rowed Corn. Our market gardeners find it a very profitable variety on account of its size and earliness. We highly recommend it to you.

$\frac{1}{2}$  lb. 25c., lb. 40c., 5 lbs. \$1.75

## CABBAGE

**SPECIAL LONG ISLAND SAVOY.** This has earned itself a very fine reputation with our customers who demand an extra fancy strain of Savoy Cabbage. It is distinctly superior to the regular Drumhead Savoy.

Pkt. 20c., oz. \$1.25,  $\frac{1}{4}$  lb. \$4.00

## MUSKMELON

**SUGAR ROCK, or Honey Rock.** This is a new and unusually fine Melon. Sweet as Sugar and solid as a rock. It has four main points of superiority: quality, productiveness, ability to stand shipping, and appearance. Its flavor and quality are the finest we have ever seen, the flesh being a very deep salmon color right out to the very rind. Under good growing conditions it is a very heavy yielder, often producing five to seven perfect Melons on one vine. Its rind is unusually hard, making it a good shipper.

Pkt. 10c., oz. 25c.,  $\frac{1}{4}$  lb. 60c., lb. \$2.00

## PEPPER

**CALIFORNIA WONDER BELL.** Originated in California, this is a large thick meated sweet Pepper of great quality. The Peppers are unusually solid and heavy, regular in shape and uniform in size. The yield is very heavy.

Pkt. 25c., oz. 75c.,  $\frac{1}{4}$  lb. \$2.50

## PANSIES

**IMPROVED SWISS GIANT MIXED.** A mixture of three growers' stocks with some separate colors added and has a large variety of colors.

Oz. \$6.00, lb. \$74.00

## AQUILEGIA

**MRS. SCOTT ELLIOTT'S STRAIN OF LONG-SPURRED HYBRIDS.** The blooms are of large size and the spurs very long. The colors range through shades of lavenders, mauves, blues, purples, whites, creams, yellows, pinks, reds, etc. The whole form a most harmonious mass of coloring seldom seen in other flowers.

Seeds, 35c. per pkt.

## CALENDULA

**SENSATION.** This new type has been thoroughly tested under glass and has been accepted as the best forcing Calendula for that use. The blooms are flat and are undoubtedly larger than those of any other type previously introduced. The color is brilliant orange, with a scarlet sheen and a full yellow center.

Pkt. 25c.,  $\frac{1}{4}$  oz. \$1.00



## GENERAL LIST VEGETABLE SEEDS

### ASPARAGUS

**Martha Washington.** This variety is the result of careful breeding by the U. S. Department of Agriculture, Washington, D. C., with the object of eliminating rust. It produces large, straight shoots of a dark green color. The tips are tight and firm and do not open out or begin to branch until well out of the ground; a very valuable feature. Oz. 15c.,  $\frac{1}{4}$  lb. 40c., lb. \$1.50.

### ASPARAGUS ROOTS

**Palmetto and Washington.** Strong, 2 yr. old roots are recommended. 100 \$3.00, 1000 \$15.00.

### ARTICHOKE

**Large French Globe** (Perennial). The flower heads are the edible portions and are cooked like Asparagus. Sow during February and March and transplant after danger from frost in rows 3 ft. apart, and 2 ft. between the plants. It requires a deep, rich loam and slight Winter protection. Plants not usually productive after third year. Pkt. 10c., oz. 75c.



BRUSSELS SPROUTS

### BRUSSELS SPROUTS

This delicious vegetable is superior to either Borecole or Spinach. The small Cabbage-like heads which grow upon the stem are much improved by a moderate frost. Sow in open ground in June and when the young plants are 6 inches high they should be transplanted to rich soil, in rows 3 feet apart and the plants 18 inches on the row.

**Selected Long Island Grown.** Pkt. 25c., oz. \$1.75,  $\frac{1}{4}$  lb. \$7.50.

## BEANS DWARF OR BUSH

### GREEN PODDED SORTS

**Bountiful.** Yellow seed, flat pod, stringless and fine quality. Big yielder. Lb. 40c., 2 lbs. 75c.

**Stringless Black Valentine.** Very hardy and productive. Extra early. Vigorous vine; pods straight and semi-round, stringless. A large crop can be depended on.  $\frac{1}{2}$  lb. 20c., lb. 35c., 2 lbs. 60c.

**Stringless Refugee.** Seed purple, splashed with tan. Round pods. Very prolific.  $\frac{1}{2}$  lb. 20c., lb. 35c., 2 lbs. 60c.

**Burpee's Stringless Green Pod.** Seed dark brown, round pods of fine quality.  $\frac{1}{2}$  lb. 20c., lb. 35c., 2 lbs. 60c.

**Giant Stringless Green Pod.** Seed yellowish brown, round pod, big yielder, fine quality.  $\frac{1}{2}$  lb. 20c., lb. 35c., 2 lbs. 60c.

**Masterpiece.** Lb. 40c., 2 lbs. 75c.

**Improved Kidney Wax.** Long, semi-round pods, slightly curved. The quality is of the best, and the pods are without strings. Not an early Bean, as it requires about 50 days to mature for picking. This is one of the finest and heaviest yielding wax podded Bean we have ever sold. We have seen 59 good pods on one vine. Lb. 40c., 2 lbs. 75c.



**DWARF OR BUSH BEANS—Continued****WAX PODDED SORTS**

Lb. 40c., 2 lbs. 75c.

**Round Pod Kidney Wax.** Long, stringless and tender.**Wardwell's Kidney Wax.** Seed kidney shaped, with purple about the eye. Pods flat, stringless and handsome.**Improved Golden Wax.** White seed splashed with purple. Pods medium in length, good quality.**Curries Rustproof Wax.** Seed purplish black, flat pods. Matures early.**Davis White Kidney Wax.** Seed white, kidney shape. Pods flat. Productive Bean.**DWARF LIMAS**

The dwarf Lima class cannot be recommended too highly. The beans can be grown and gathered much more easily than the Pole Limas as the vines require no support. They can also be grown closer together than those of any Pole variety. Dwarf Limas are fully equal in quality to Pole Limas and as a rule are earlier maturing.

 $\frac{1}{2}$  lb. 25c., lb. 50c., 2 lbs. 90c.

**Fordhook Bush Lima.** An improved dwarf Lima of the Kumerle type. It is sometimes called Potato Bush Lima. The plants are vigorous and erect, bearing well above the ground. The pods, which are produced in large clusters, are medium green, about  $4\frac{3}{4}$  in. long and each contains 3 to 5 large beans of exceptionally fine quality. It is much more productive than Kumerle and matures earlier. Seed large, irregularly oval in shape, very thick, white with greenish tinge. This sort is popular for home and market use, especially in the East.



IMPROVED GOLDEN WAX BEAN



FORDHOOK BUSH LIMA BEAN

**Burpee's Improved Bush Lima.** This is a little the earliest maturing of the large seeded Limas. The plants are vigorous and productive. The pods are medium green, very large, about 5 in. long, thick and usually contain 4 beans, which are unusually thick, of largest size and of excellent quality. Seed very large, thick and usually shows a greenish white tinge which is generally considered an indication of superior quality. One of the best and most extensively used Bush Limas for the market as well as home garden.

**Henderson's Bush Lima.** A dwarf form of the small white Lima, valuable on that account, and because of its extreme earliness, hardness and productiveness. The plants are without runners but continue to grow and set pods until stopped by frost. The leaves are small and very dark green; flowers small, yellowish white, borne in clusters and often above the foliage. The pods are medium dark green, short, about  $2\frac{3}{4}$  in., flat and contain 2 to 4 beans which are of excellent quality either green shelled or dry. This is much used by canners, as well as for home and market garden use. Seed small, flat and white with slight tinge of yellow.

**Dreer's Bush.** Seed thick, Potato type. Productive but later than the others.

**POLE BEANS** $\frac{1}{2}$  lb. 25c., lb. 45c., 2 lbs. 80c.**Early Jersey.** An early sort.**New Ideal.** Large pods borne in clusters.**Early Leviathan.** Early and prolific; large pods.**Challenger (Improved Dreer's).** Large, plump beans in the Potato class.

## BEANS—Continued

## POLE OR RUNNING

Although Pole Beans require considerable care and labor, they are when properly grown usually of longer bearing period than the dwarf sorts and are generally more productive.

**Special Worcester Pole (Mammoth Cranberry).** We have an exceptionally choice, large-seeded, large-podded, high-colored stock of these Beans. They are the true old-fashioned type, hard to be found.  $\frac{1}{2}$  lb. 20c., lb. 40c., 2 lbs. 75c.

**Kentucky Wonder.** Also known as Old Homestead. We believe this variety is the most practically useful of the green-podded Pole Beans suitable for use as snaps. It is an early, very prolific sort, with showy pods which are of most excellent quality. The vines are vigorous, climbing well and very productive, bearing pods in large clusters. The pods are medium light green, very long, often reaching 9 or 10 in., curved and twisted, nearly round and very crisp when young, becoming very irregular and spongy as the beans ripen. Seed long, oval, slightly flattened, dun colored. One of the very best early Pole Beans for the home garden or market. The quality of our stock is unsurpassed.  $\frac{1}{2}$  lb. 20c., lb. 40c., 2 lbs. 75c.

**Scarlet Runner.** Used mostly as an ornamental vine. Producing scarlet flowers, pods are large.  $\frac{1}{2}$  lb. 25c., lb. 45c., 2 lbs. 80c.

**Kentucky Wonder Wax.** Seed deep brown, long, meaty yellow pods.  $\frac{1}{2}$  lb. 25c., lb. 45c., 2 lbs. 80c.



POLE BEAN KENTUCKY  
WONDER

BROCCOLI OR ITALIAN  
CAULIFLOWER

*1 ounce will sow a bed 40 feet square and produce about 2000 plants*

The cultivation of Broccoli is the same as for Cauliflower which it very much resembles. We wish to emphasize our superior strain of Italian Broccoli. It costs more than some stocks but it has proven to be the best strain of any Broccoli on the market.

**Special Italian.** Heads compact of a good size, and most certain to head. Pkt. 25c., oz. \$2.50,  $\frac{1}{4}$  lb. \$8.00.

## BEET

Pkt. 10c., oz. 15c.,  $\frac{1}{4}$  lb. 45c., lb. \$1.50

**Woodruff's Early Wonder.** This is an early Beet with a dark smooth skin, small tap root, medium sized top and exceptionally dark red color. It matures very evenly. This variety is a very shy seed yielder which makes it cost a little more than other varieties. The seed itself is smaller and therefore a pound goes further.

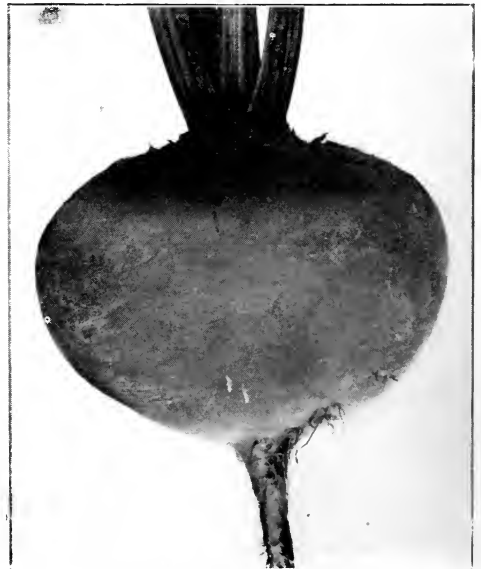
**Crimson Globe.** Second early sort, which does not grow particularly large, but is very fine grained; both skin and flesh are dark red, while the tops are quite small.

**Crosby's Egyptian.** Extremely early, and one of the best sorts for garden use; larger than the old type Egyptian, but with the same rich red color.

**Detroit Dark Red.** A Turnip-shaped Beet with blood red skin and flesh. The tops are compact and upright, thus permitting of closer planting than most other sorts.

**Extra Early Dark Red Egyptian.** Early, small top, flat, dark flesh.

**Edmund's Blood Turnip.** Summer cropper for Winter use. Dark red flesh, large top.



CROSBY'S EGYPTIAN BEET



CABBAGE, COPENHAGEN MARKET

## MANGEL WURZEL BEETS

Oz. 10c.,  $\frac{1}{4}$  lb. 30c., lb. 75c.

**Mammoth Long Red.** Enormous size, 30 to 50 tons per acre.

**Golden Tankard.** Bright, yellow, large. Tends to give color to milk.

## SWISS CHARD

Oz. 15c.,  $\frac{1}{4}$  lb. 40c., lb., \$1.25

**Lucullus.** Stalks as thick and broad as Rhubarb. Light green and much crumpled.

**Broad Rib Green.** Grown for its leaves only. Midrib of the leaf is cooked and served like Asparagus and the leaves like Spinach.



CAULIFLOWER SNOWBALL

## CABBAGE

**Golden Acre.** This is a very fine early variety with well-formed, round heads similar to Copenhagen Market and earlier than Jersey Wakefield. The heads are very firm, bright green in color and have the appearance of being all cast in the same mold. Pkt. 15c., oz. 60c.,  $\frac{1}{4}$  lb. \$2.00, lb. \$7.50.

**Copenhagen Market** (*Very Special Stock*). Small bottom leaf with a short stem and very early, perfectly round heads. Pkt. 10c., oz. 50c.,  $\frac{1}{4}$  lb. \$1.50, lb. \$5.00.

**Early Jersey Wakefield.** Early pointed head. Pkt. 10c., oz. 40c.,  $\frac{1}{4}$  lb. \$1.00, lb. \$3.50.

**Early Winnigstadt.** One of the old standbys, producing a medium size, long-pointed or cone-shaped very solid head which is closely wrapped with dark, slate-colored leaves. A favorite with old gardeners as it is one of the very best second early sorts. Pkt. 10c., oz. 30c.,  $\frac{1}{4}$  lb. 85c., lb. \$3.00.

**Succession.** A fine general purpose Cabbage. Large heads, fine quality for Fall or Winter. Pkt. 10c., oz. 40c.,  $\frac{1}{4}$  lb. \$1.00, lb. \$3.50.

**Danish Ballhead or Hollander.** The best Winter keeper. Solid, heavy head. Pkt. 10c., oz. 40c.,  $\frac{1}{4}$  lb. \$1.00, lb. \$3.50.

**Premium Late Flat Dutch.** One of the old large round sorts. Good keeper. Pkt. 10c., oz. 40c.,  $\frac{1}{4}$  lb. \$1.00, lb. \$3.50.

**Drumhead Savoy.** Selected stock Savoy Cabbage. Pkt. 10c., oz. 40c.,  $\frac{1}{4}$  lb. \$1.25.

**Mammoth Red Rock.** Large, sure heading red Cabbage. Pkt. 10c., oz. 40c.,  $\frac{1}{4}$  lb. \$1.25, lb. \$4.00.

**Autumn King.** Large flat head. Pkt. 10c., oz. 40c.,  $\frac{1}{4}$  lb. \$1.00, lb. \$3.50.

## CHINESE OR CELERY CABBAGE

**Wong Bok.** This is the original Chinese grown strain producing a very heavy compact head. Has delicious mild flavor and the pale green, closely wrapped leaves blanch to almost a pure white. Our select strain produces heads of remarkable quality. Sow and cultivate like Lettuce. Pkt. 10c., oz. 40c.,  $\frac{1}{4}$  lb. \$1.25, lb. \$4.00.

## CAULIFLOWER

We recommend our Snowball Cauliflower as the best there is.

**Snowball.** Earliest maturing strain of short-leaved type. It is well adapted for forcing or Winter use and is one of the most popular of all sorts, both for the market gardener and home use. Our strain of this selected Denmark grown seed can be relied upon as one of the most satisfactory of all. Pkt. 25c.,  $\frac{1}{4}$  oz. 75c., oz. \$2.50.

**Extra Early Dwarf Erfurt.** Similar in general characteristics to Snowball, but not quite so early and somewhat larger in growth. Pkt. 25c.,  $\frac{1}{4}$  oz. 75c., oz. \$2.50.

**Danish Giant or Dry Weather.** Will produce a good crop when other varieties are seriously damaged by lack of moisture. Heads are of good size and extremely solid. Pkt. 25c.,  $\frac{1}{4}$  oz. \$1.00,  $\frac{1}{2}$  oz. \$1.75, oz. \$3.00.

## CARROTS

**Chantenay.** This splendid Carrot belongs to the half-long, stump-rooted type, with good girth and consequently makes a heavy tonnage yield, and also a beautiful-shaped Carrot for bunching at any time after it has made half its growth. We recommend it above all others as a bunching Carrot. The color is a rich orange red. Pkt. 10c., oz. 15c.,  $\frac{1}{4}$  lb. 40c., lb. \$1.25.

**Coreless.** Fine sweet tender Carrot. Popular with both market and private gardeners. Roots are half long, stump ending and coreless. The top is rather small. We recommend a trial for this Carrot. Pkt. 10c., oz. 20c.,  $\frac{1}{4}$  lb. 65c., lb. \$2.25.

**Selected Danvers.** A fine stock of the old popular sort. Bred to an even size and fine color. Pkt. 10c., oz. 15c.,  $\frac{1}{4}$  lb. 40c., lb. \$1.25.

**Early Short Horn.** One of the very earliest varieties. While the roots do not grow large, they are almost globe-shaped and are reddish orange in color. This variety is splendid for forcing under glass. Pkt. 10c., oz. 15c.,  $\frac{1}{4}$  lb. 40c., lb. \$1.25.

**Improved Long Orange.** A long, pointed variety. Heavy yielder and a good stock Carrot. Pkt. 10c., oz. 15c.,  $\frac{1}{4}$  lb. 40c., lb. \$1.25.

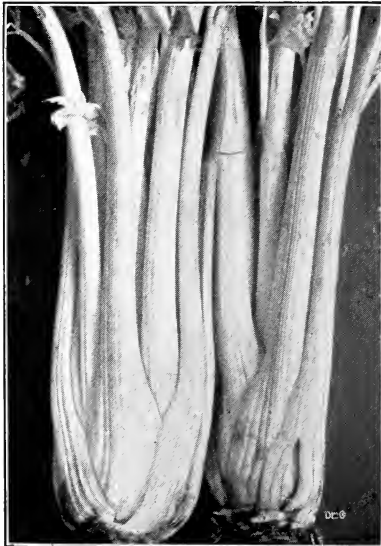


CARROTS, SELECTED DANVERS

## CELERY

**Wonderful.** The finest yellow Celery ever introduced. Our stock of Wonderful has no soft stalks, is high germination and proven seed that was tested last year. We advise all Celery growers to try this stock liberally. Pkt. 25c., oz. \$2.50,  $\frac{1}{4}$  lb. \$8.50, lb. \$30.00.

**Easy Blanching. (Sanford Superb).** This is a valuable and comparatively new variety which follows about two weeks later than Golden Self Blanching. It grows well on both muck and upland, has splendid keeping qualities, and is not as susceptible to blights as some other sorts. We have a very choice strain of Easy Blanching and recommend it highly. Pkt. 15c., oz. 75c.,  $\frac{1}{4}$  lb. \$2.50, lb. \$8.00.



CELERY, PARIS GOLDEN SELF BLANCHING

**Paris Golden Self Blanching.** Plants are stocky and full hearted, making a vigorous growth, and is easily bleached. It is considered a good storage Celery. Our stock is the old original strain, as first introduced in France. If you want a quality Paris Golden, we believe we have it. Pkt. 20c., oz. \$1.00,  $\frac{1}{4}$  lb. \$3.50, lb. \$12.00.

**Giant Pascal (Frost Strain).** This is the finest eating green Celery known. Crisp, brittle, free from strings and has that nutty flavor which makes every bite taste like more. Pkt. 10c., oz. 50c.,  $\frac{1}{4}$  lb. \$1.50, lb. \$5.00.

**Winter Queen.** This is a good variety of Celery for Winter and Spring use. Has a very large heart, creamy white and solid. Pkt. 10c., oz. 35c.,  $\frac{1}{4}$  lb. 75c., lb. \$2.50.

**Boston Market.** It grows a very stocky heart and for eating qualities is very fine. We have an exceptionally fine stock of this Celery. Pkt. 10c., oz. 35c.,  $\frac{1}{4}$  lb. 75c., lb. \$2.50.

**White Plume.** The earliest Celery, but it does not have the quality nor appearance of Golden Self Blanching, which follows right after it. Pkt. 10c., oz. 35c.,  $\frac{1}{4}$  lb. \$1.00, lb. \$3.50.

### CELERIAC, TURNIP-ROOTED CELERY

**Giant Smooth Prague.** Pkt. 10c., oz. 40c.,  $\frac{1}{4}$  lb. \$1.25, lb. \$4.00.

## CARDOON

**Smooth Solid Cardoon.** The midribs of the leaves are blanched and used in the same way as Celery. The main root may also be cooked and used as a table vegetable. Pkt. 10c., oz. 40c.,  $\frac{1}{4}$  lb. \$1.25.

## CHERVIL

**Curled.** Sow seed in early Spring, and, when the plants are well established, reset to about a foot apart. This variety is superior to the old sort, being earlier and fully of as fine flavor. Pkt. 10c., oz. 30c.,  $\frac{1}{4}$  lb. \$1.00.

## CHICORY

**Witloof** (French Endive). Sow the seed in the open ground in June and allow the plants to grow until November. Then take up the roots, trim the leaves to about 1½ in. from the neck, and replant in trenches, planting the roots upright about 1½ in. apart. Fill the trench with light soil and in 4 to 5 weeks the leaves will attain a good size and may be removed for use. ½ oz. 30c., oz. 60c.

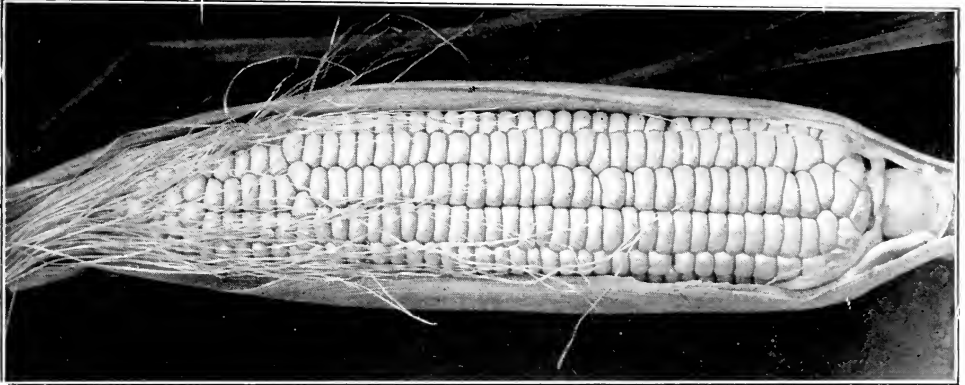
## COLLARDS

**Georgia, Southern or Creole.** Cultural directions are the same as for Cabbage. In many parts of the country Collards are used as a substitute for Cabbage. ½ oz. 15c., oz. 25c.

## CRESS

**Curled, or Peppergrass.** A quick growing plant with sharp, pungent peppery flavor. Sow the seed about ¼ in. deep in drills 1 ft. apart, thinning the plants to 4 in. apart in the drill. Pkt. 5c., oz. 10c., ¼ lb. 25c.

**Water.** Sow the seed broadcast on garden soil and keep the soil wet until the plants can be transplanted along the sides of flowing streams. Cuttings can begin in about 60 days. Pkt. 10c., oz. 75c., ¼ lb. \$2.00.



GOLDEN BANTAM SWEET CORN

# SWEET CORN

½ lb. 15c., lb. 30c., 5 lbs. \$1.50

**Golden Sunshine.** The most outstanding development in Sweet Corn since the introduction of the original Golden Bantam. Nine days earlier than Golden Bantam; slightly larger with quite uniformly 12 rows instead of 8 and possessing that superb quality of the original not found in other yellow sorts. We are conservative in these statements, for many claim it to be 12 or more days earlier and even better quality. In our trials it was a great surprise to find every claim for it fully justified and even more. Surely everybody should plant Golden Sunshine, whether for home or market.

**Golden Bantam.** No market or home garden can afford to be without at least two plantings of this wonderful Corn each season. Stalks about 4 ft. and ears small with large, exceptionally sweet kernels.

**Whipple's Early Yellow.** Twice the size of Golden Bantam, and matures in about 85 days. Has very fine quality and is growing in popularity.

**Golden Rod.** A yellow corn of the Golden Bantam type and flavor, but somewhat later and larger ears; very fine to follow Golden Bantam on account of its large size, color and sweetness.

**Bantam Evergreen.** A yellow Corn of the Golden Bantam type and flavor, but somewhat later and larger ears; very fine to follow Golden Bantam on account of its large size.

**Black Mexican.** Good-sized black ears, not to be planted with white varieties as it crosses very easily.

**Howling Mob.** Large size ears, white, very sweet and deep kernels, small cob, and one of the most popular of the second early sorts.

**Country Gentlemen.** This is considered by some the best of all Sweet Corn. It is of the shoe peg variety and not as popular as years ago on account of the short time it may be picked in prime condition.

**Stowell's Evergreen.** Standard main crop variety; ears large and thick grained; very deep and tender.

**Late Mammoth.** Large-eared variety maturing after Stowell's.

## FIELD AND ENSILAGE CORN

*Field Corn weighs 56 lbs. per bushel*

14 lbs. \$1.00, 56 lbs. \$3.50

**Longfellow.** Second early Flint Corn; 10 to 12 rows; height 8 ft.

**Improved Leaming.** An ideal yellow Dent Ensilage Corn and popular everywhere. A tall grower and prolific yielder. Many stalks produce two long ears, with small cobs filled with deep, well dented, golden yellow grains. Ripens in from 110 to 120 days. The leafy stalks make splendid fodder. An exceedingly valuable variety for ensilage.

## CORN SALAD

### Fetticus, or Lamb's Lettuce.

A small salad plant which may be used in Winter and Spring as a substitute for Lettuce. Sow the seed thinly in shallow drills about a foot apart, spreading the soil firmly over the seed. Pkt. 5c., oz. 10c.,  $\frac{1}{4}$  lb. 30c.

## CUCUMBER

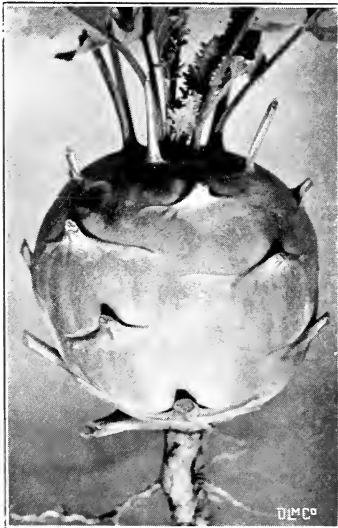
**Hybrid Long Green.** The best all around Cucumber in existence. It has a long, straight, attractive shape, with a very rich green color, a fine lot of showy white spines and the color stays green for a week, making it a fine shipper. The vine is medium size, making it a fine greenhouse Cucumber or for under sash. Pkt. 10c., oz. 20c.,  $\frac{1}{4}$  lb. 60c.

**Improved White Spine.** Fruit straight, dark green with a few white spines. Because of its tender flesh and excellent quality, it is one of the very best table Cucumbers. Pkt. 10c., oz. 20c.,  $\frac{1}{4}$  lb. 60c., lb. \$2.00.

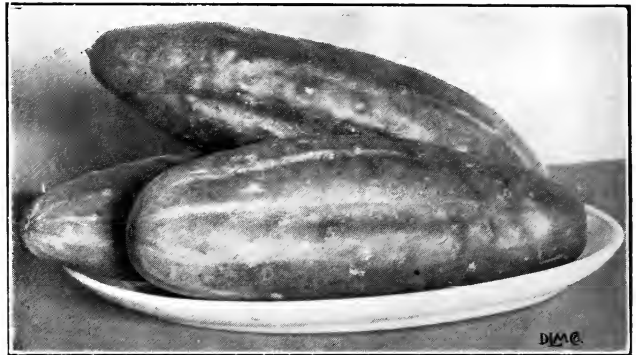
**Green Prolific, or Boston Pickling.** Fruit medium size, but produced in quantities; is a favorite sort with pickle growers and commercial gardeners. Pkt. 10c., oz. 15c.,  $\frac{1}{4}$  lb. 45c., lb. \$1.50.

## DANDELION

**Arlington Thick Leaf.** We wish to emphasize the superior quality of our Arlington Thick Leaf Dandelion, both as to quality of the plant, being very thick leaved and stocky, which fills up the bushel, and also very high germinating seed. Oz. 25c.,  $\frac{1}{4}$  lb. 75c.



KOHLRABI, EARLY WHITE VIENNA



CUCUMBER, IMPROVED WHITE SPINE

## DILL

**Long Island Mammoth.** We have a superior strain. Pkt. 10c., oz. 25c.,  $\frac{1}{4}$  lb. 60c.

## EGGPLANT

**Extra Early Long Purple.** Very productive and early variety. Pkt. 10c., oz. 50c.,  $\frac{1}{4}$  lb. \$1.75, lb. \$6.00.

**Black Beauty.** Very desirable sort for the market as the fruit holds its color well. Pkt. 10c., oz. 50c.,  $\frac{1}{4}$  lb. \$1.50, lb. \$5.00.

**New York Spineless.** Pkt. 10c., oz. 50c.,  $\frac{1}{4}$  lb. \$1.50, lb. \$5.00.

## ENDIVE OR ESCAROLE

**Batavian Broadleaf (Full Heart).** Large and tender for Fall or Winter. Pkt. 10c., oz. 20c.,  $\frac{1}{4}$  lb. 50c., lb. \$2.00.

**Large Green Curled (Red Ribbed).** Hardy variety, fine quality. Pkt. 10c., oz. 20c.,  $\frac{1}{4}$  lb. 50c., lb. \$2.00.

**White Curled.** Light yellow, very curly. Pkt. 10c., oz. 20c.,  $\frac{1}{4}$  lb. 50c., lb. \$2.00.

## FENNEL

**Florence or Italian.** Forms a bulb above ground at base of leaf stalk which is excellent when cooked. Pkt. 10c., oz. 20c.,  $\frac{1}{4}$  lb. 40c., lb. \$1.50.

## KALE OR BORECOLE

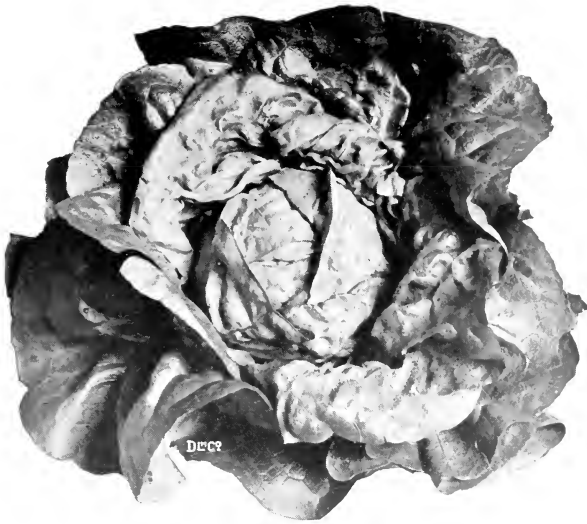
**Dwarf Green Curled Scotch.** Very popular for general use. Pkt. 10c., oz. 20c.,  $\frac{1}{4}$  lb. 40c., lb. \$1.50.

**Dwarf Siberian or German Sprouts.** Stands severest climate. Pkt. 10c., oz. 15c.,  $\frac{1}{4}$  lb. 35c., lb. \$1.00.

## KOHLRABI

**Early White Vienna.** Very early, whitish green in color, with small tops. Pkt. 10c., oz. 20c.,  $\frac{1}{4}$  lb. 75c., lb. \$2.50.

**Early Purple Vienna.** Similar to White Vienna except in color. Pkt. 10c., oz. 20c.,  $\frac{1}{4}$  lb. 60c., lb. \$2.00.



BIG BOSTON LETTUCE



MUSSELBURGH LEEK

## LETTUCE

Pkt. 10c., oz. 20c.,  $\frac{1}{4}$  lb. 50c., lb. \$1.50, except where noted

**New York, Los Angeles, or Wonderful.** This variety produces heads of unusual size, frequently averaging 18 in. in diameter and weighing from 3 to 4 lbs. and nearly as solid as a Cabbage. It blanches itself naturally, is crisp, tender and of excellent flavor, always free from bitterness. Pkt. 10c., oz. 25c.,  $\frac{1}{4}$  lb. 75c., lb. \$2.50.

**Big Boston.** A fine forcing strain or for open ground. Large, solid heads. Our stock is particularly fine, has been selected by an expert, and our customers tell us it is the finest strain of Big Boston they can obtain anywhere.

**New Early May King.** Useful for outdoor planting or for forcing under glass. Yellowish green leaves tinged with brown, with center of golden yellow.

**Salamander.** An excellent variety for second crop. Color is light green with creamy yellow center.

**Black-seeded Simpson.** One of the earlier varieties, forming large, loose heads, which are light green, tinged with golden yellow.

**Early Curled Simpson (White Seeded).** A good sort for early planting outdoors or for starting in coldframes. Heads fair size, compact, yellowish green.

**Iceberg.** No Lettuce surpasses Iceberg in quality. Heads are very solid and of medium size.

**Allheart.** A reliable hard-heading variety which is adapted to Spring and Summer use, as it withstands Midsummer heat; leaves are closely set, forming a solid heart, yellowish green.

## COS LETTUCE

This type of Lettuce differs from all other varieties, in that the heads are conical in form and from 7 to 9 inches high, with a diameter of from 4 to 6 inches. The heads should be tied together at the top so that the inner leaves will blanch.

Oz. 20c.,  $\frac{1}{4}$  lb. 50c., lb. \$1.50

**Trianon.** Usually considered the best variety by most growers; the leaves are long, spoon-shaped, forming an oval head.

**Paris White.** Lighter in color than other varieties; leaves crisp and tender.

## LEEK

This vegetable belongs to the Onion family and is chiefly used for flavoring soups and salads. Seed should be sown in early Spring, in drills, covering the seed not more than  $\frac{1}{2}$  inch deep. When the plants are well up they should be thinned so that they will stand 4 to 6 inches apart. To blanch the plants, draw the earth well up toward the top.

**London, or American Flag.** One of the largest and hardest varieties; mild in flavor. Pkt. 10c., oz. 30c.,  $\frac{1}{4}$  lb. 80c.

**Musselburgh.** Probably the hardest growing variety, with broad, spreading leaves. Pkt. 10c., oz. 35c.,  $\frac{1}{4}$  lb. \$1.00.

**Italian Mammoth.** A much used variety of Leek which grows unusually large. It has a stalk that is both thick and tall.

## MUSHROOMS

### BOTTLE SPAWN, NEW PROCESS

In this new method the spores are propagated in sterile glass bottles, the spawn removed, dried and packed in cartons. Excluded from the spawn are the spores of other fungous growths, many of which are highly poisonous; no insect eggs, flies, or weed seeds. Pieces the size of a nut are planted in the usual way. Produces white, light brown and cream-colored mushrooms. Qt. \$1.25.



## MUSKMELON

**Royal Sovereign.** An English variety, largely used for growing under glass, although in favorable seasons it will mature in the open ground. Pkt. 50c.

**Bender's Surprise.** We believe the Bender Melon to be the best flavor and finest eating Melon we have ever tasted, and strongly recommend it over every other Melon. It is of the Surprise type and strongly related to Irondequoit and Tip Top, but very superior in eating quality. The skin when ripe is light greenish yellow, the flesh is a very deep salmon. It can be successfully grown as far north as Minneapolis. Pkt. 10c., oz. 25c.,  $\frac{1}{4}$  lb. 85c., lb. \$3.00.

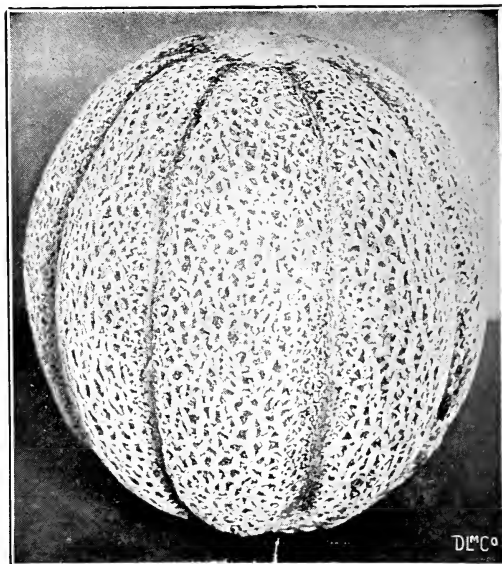
**Emerald Gem.** One of the best early Melons, and especially adapted for a home garden or for nearby markets, as it will not ship well because it will get soft on the ends. Deeply ribbed, lightly netted, flesh rich salmon, exceedingly small seed cavity. Very sweet. Pkt. 10c., oz. 15c.,  $\frac{1}{4}$  lb. 35c., lb. \$1.00.

### GREEN-FLESHED VARIETIES

**Jenny Lind.** Small fruit, with button on flower end. Pkt. 10c., oz. 15c.,  $\frac{1}{4}$  lb. 35c., lb. \$1.00.

**Rocky Ford.** Small round fruit, no ribs and heavily netted. Pkt. 10c., oz. 15c.,  $\frac{1}{4}$  lb. 35c., lb. \$1.00.

**Honey Dew.** Cassaba type, large, oval fruit, smooth lemon-tinted shell. Pkt. 10c., oz. 20c.,  $\frac{1}{4}$  lb. 40c., lb. \$1.25.



MUSKMELON ROCKY FORD

## WATERMELON

Pkt. 5c., oz. 10c.,  $\frac{1}{4}$  lb. 25c., lb. 75c.

**Ice Cream.** One of the best for growing in the North; early; short and oblong; thin rind, flesh bright scarlet; seeds white, quality very good.

**Kleckley's Sweet.** Fine for nearby markets; medium size, thin rind, flesh bright red and crisp.

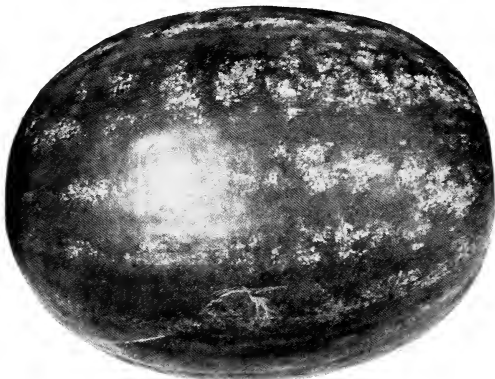
**Mountain Sweet.** Fairly early, medium to large size, very dark green and good quality.

**Cole's Early.** Very early. Fine for home gardens.

## CITRON

**Colorado Green Seed Citron.** Pkt. 5c., oz. 10c.,  $\frac{1}{4}$  lb. 25c., lb. 75c.

**Colorado Red Seed Citron.** Pkt. 5c., oz. 10c.,  $\frac{1}{4}$  lb. 25c., lb. 75c.



COLE'S EARLY WATERMELON

## MUSTARD

Mustard is not only used as a condiment, but the green leaves are used as a salad or cut and boiled like Spinach. Sow as early in the Spring as the ground will permit, in drills about 18 inches apart, covering  $\frac{1}{2}$  inch deep. For succession, sow every few weeks till Autumn. Water freely. In the South, the seed may be sown in Autumn and the plants used early in the Spring as a salad and for greens.

**White English.** The leaves are comparatively small and smooth, deeply cut or divided and of medium dark green color. The plant is upright of rapid growth and soon bolts to seed. The leaves, when young are mild and tender. Seed light yellow and larger than that of other varieties. Pkt. 10c., oz. 15c., 2 ozs. 20c.,  $\frac{1}{4}$  lb. 25c., lb. 60c.

**Southern Giant Curled.** The leaves are large, light green, with tinge of yellow, much crimped and frilled at edges. The plant is upright or slightly spreading in growth. This variety is highly esteemed in the South for the market as well as the home garden on account of its vigorous growth, hardiness and good quality. Seeds small, reddish brown to nearly black. Pkt. 10c., oz. 15c., 2 ozs. 20c.,  $\frac{1}{4}$  lb. 25c., lb. 75c.

## OKRA OR GUMBO

**Perkins Mammoth Podded.** Height 3 to 4 ft. Pods deep green, long and slender. Very productive. Pkt. 10c., oz. 15c.,  $\frac{1}{4}$  lb. 30c., lb. 75c.

**White Velvet.** Plant rather tall, very productive. Pods medium length. Pkt. 10c., oz. 15c.,  $\frac{1}{4}$  lb. 30c., lb. 75c.

**Dwarf Green Prolific.** An extra early maturing variety. Very productive. Plants are more dwarf in habit of growth than those of other varieties. Pods short, deep green, slightly corrugated, tender and of good quality. Pkt. 10c., oz. 15c., 2 ozs. 20c.,  $\frac{1}{4}$  lb. 25c., lb. 75c.



## MEDICINAL HERBS

- Anise.** Pkt. 10c., oz. 20c.,  $\frac{1}{4}$  lb. 50c., lb. \$1.50.  
**Balm.** Pkt. 10c., oz. 40c.,  $\frac{1}{4}$  lb. 85c., lb. \$3.00.  
**Borage.** Pkt. 10c., oz. 20c.,  $\frac{1}{4}$  lb. 40c., lb. \$1.25.  
**Coriander.** Pkt. 5c., oz. 10c.,  $\frac{1}{4}$  lb. 25c., lb. 60c.  
**Caraway.** Pkt. 5c., oz. 10c.,  $\frac{1}{4}$  lb. 25c., lb. 60c.  
**Sage.** Pkt. 10c., oz. 20c.,  $\frac{1}{4}$  lb. 60c., lb. \$2.00.  
**Sweet Basil.** Pkt. 10c., oz. 20c.,  $\frac{1}{4}$  lb. 60c., lb. \$2.00.  
**Sweet Marjoram.** Pkt. 10c., oz. 30c.,  $\frac{1}{4}$  lb. \$1.00, lb. \$3.00.  
**Summer Savory.** Pkt. 10c., oz. 20c.,  $\frac{1}{4}$  lb. 50c., lb. \$1.60.  
**Thyme.** Pkt. 10c., oz. 30c.,  $\frac{1}{4}$  lb. \$1.00, lb. \$3.00.  
**Wormwood.** Pkt. 10c., oz. 30c.,  $\frac{1}{4}$  lb. \$1.00, lb. \$3.00.  
**Sweet Fennel.** Pkt. 10c., oz. 15c.,  $\frac{1}{4}$  lb. 40c., lb. \$1.25.  
**Horehound.** Pkt. 20c., oz. 40c.,  $\frac{1}{4}$  lb. \$1.25, lb. \$4.00.

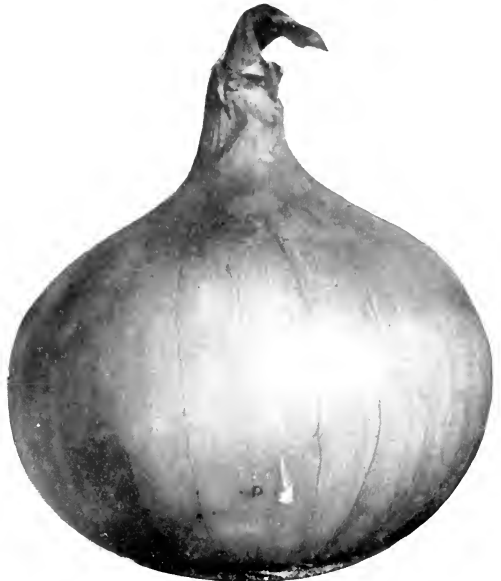
## ONION SEED

Pkt. 10c., oz. 40c.,  $\frac{1}{4}$  lb. \$1.00, lb. \$3.50

- Southport Red Globe.** Large, globe-shaped, good keeper. Rich red color.  
**Prizetaker.** Large, yellow. Often used in hotbeds for transplanting.  
**Yellow Globe Danvers.** Very popular, good keeper.  
**Southport Yellow Globe.** One of the best yellow Winter keepers.  
**Southport White Globe.** Most popular Winter keeping white.  
**Denia.** A member of the Spanish Onion family, growing to a large size. The skin is the usual light yellow, while the flesh is clear white and extremely mild.  
**Early Barletta.** A very early variety, bulbs small and very white. A popular bunching sort, somewhat like White Queen. Bulbs from 1 to 2 in. in diameter.  
**Ailsa Craig.** In ordinary culture this variety will grow to about the size of Prizetaker, and it is not unusual to have bulbs weighing 2 lbs. and over. The skin is pale yellow and the snowy white flesh is fully as mild as the Spanish Onion.



ONION SETS



ONION, SOUTHPORT YELLOW GLOBE

## ONION SETS

For a real crop of good keeping Onions grown from sets, we recommend our Japanese above all others.  
**Japanese Onion Sets.** Lb. 40c., 8 lbs. \$1.75.  
**White Onion Sets.** Lb. 35c., 8 lbs. \$1.50.  
**Yellow Onion Sets.** Lb. 35c., 8 lbs. \$1.50.

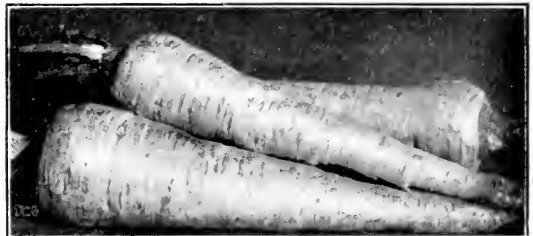
## PARSLEY

- Hamburg Parsnip Rooted.** This variety has edible roots, resembling Parsnips. Roots used for flavoring soups and stews, having somewhat a Celery flavor. Our stock of Hamburg is a very choice selection. Pkt. 10c., oz. 15c.,  $\frac{1}{4}$  lb. 40c., lb. \$1.25.  
**Moss Curled.** One of the most popular for market and home garden. Very curly. Pkt. 10c., oz. 15c.,  $\frac{1}{4}$  lb. 45c., lb. \$1.25.  
**Plain Leaf.** Leaves are plain. Used for soups. Pkt. 10c., oz. 15c.,  $\frac{1}{4}$  lb. 35c., lb. \$1.00.

## PARSNIP

Parsnips are about one of the easiest of the vegetables to grow. The seed germinates slow and requires a full season to mature. Sow in early Spring up to May 20th.

**Hollow Crown.** Half long, thick through, smooth and good color. A choice stock. Oz. 15c.,  $\frac{1}{4}$  lb. 50c.



PARSNIP HOLLOW CROWN

## PEPPER (Sweet)

**World Beater.** A large sort, a cross between Chinese Giant and Ruby King, having the longer shape and earliness of the latter with the size of the former. Fruits 5 in. long by 3½ in. diameter; flesh thick and mild; very productive and a good shipper. Pkt. 10c., ½ oz. 30c., oz. 50c., ¼ lb. \$1.60.

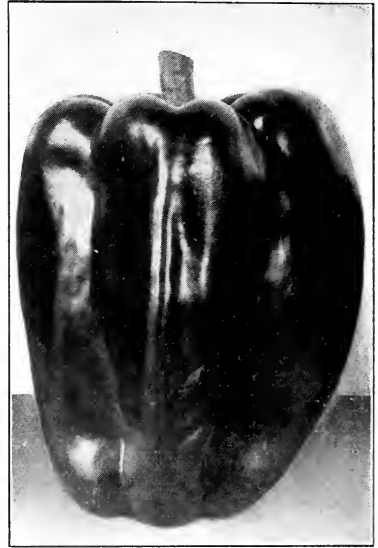
**Bull Nose.** Large, thick meated; bright red; mild flavor; very popular for stuffing when young and dark green; bright red when ripe; mild flavor and very productive. Pkt. 10c., oz. 40c., ¼ lb. \$1.40.

**Sweet Mountain.** Resembles Bull Nose but longer fruit; mild flavor, often growing to be 6 in. long by 3½ to 4 in. in diameter; bright red. Pkt. 10c., oz. 40c., ¼ lb. \$1.40.

**Chinese Giant.** It is very prolific for so large a Pepper. The productiveness may be increased by pinching off the first or "king blossoms." The fruit grows 4 to 5 in. broad on top and of equal length, and quite uniform in size; the flesh is unusually thick, mild flavor and makes a very fine salad sliced and served like Tomatoes. The color is green turning to glossy scarlet when ripe. Pkt. 15c., ½ oz. 50c., oz. 90c., ¼ lb. \$2.75.

**Long Red Cayenne.** Fruit often curved and twisted; 4 to 4½ in. long and about 1 in. in diameter; hot and pungent; color bright red. Pkt. 10c., oz. 50c., ¼ lb. \$1.40.

**Red Cluster.** Very productive; small fruit which are exceedingly hot and coral red in color. Pkt. 10c., oz. 50c., ¼ lb. \$1.75.



PEPPER, BULL NOSE

## PEAS

*Wrinkled varieties, 56 lbs. per bushel; smooth, 60 lbs.*

### EARLY GARDEN VARIETIES

**Lb. 35c., 2 lbs. 65c., 5 lbs. \$1.50**

**Alaska, or Earliest of All.** The earliest Pea in cultivation, very hardy, seed small, round, bluish green, vines 2½ to 3 ft. high, pods 2½ in. long, 4 to 6 peas in a pod. The crop matures evenly, mostly gathered in one picking.

**First and Best.** Only about two days later than Alaska; pods averaging slightly larger, vines 2½ to 3 ft. high, dry seed, white or manilla color, considered better quality than Alaska.

**Sutton's Excelsior.** Fine variety for home garden. Pods a trifle light green for market gardeners. Pods 3¼ in., broad and blunt, light color and set single. Vines 18 in. 64 days to table.

**Gradus.** A wrinkled seeded variety of exceptional eating quality. Large, dark green pods, set single on vines about 30 in. in height of a light green color.

**American Wonder.** For home garden use only. Pods 2½ in., blunt, light color, set single. Vine 12 in., dark color. 60 days to the table.

### LATE VARIETIES

**Lb. 35c., 2 lbs. 65c., 5 lbs. \$1.50**

**Improved Telephone.** The leading large podded, main crop sort. Pods 5 in., pointed, very dark, set single. Vines 42 in., dark and heavy. 71 days to the table. We believe we have one of the best stocks of Improved Telephone Peas in existence.

**Alderman.** Very fine, large-podded market gardeners' main crop Pea. Pods 4½ in., pointed, very dark, set single. Vines 40 in., medium dark. 72 days to the table.

**Champion of England.** A very tall, rank grower, but a wonderful yielder of delicious quality Peas; seed wrinkled; height, 5 ft.



THOMAS LAXTON

**PEAS—Continued**

**Quite Content.** This is the largest podded Pea, the pods being 5-6 in. in length. It is later than Vaughan's Improved Telephone; the vines grow 5 to 6 ft. high. They yield large peas of fine flavor. A splendid exhibition sort.

**Dwarf Telephone.** Fine for home or market gardens. General habits of the Telephone, but a dwarf vine. Pods  $4\frac{1}{2}$  in., pointed, and slightly curved. Light green color and set single and double. Vines 20 in. 72 days to the table.

**POTATOES**

As prices of Potatoes fluctuate according to supply and demand, it is impossible to make prices for seed stock that will hold throughout the planting season. Catalog goes to press in December. Quotations will be given on application. All our seed stock is northern grown by specialists and sold at very close prices. Orders booked in advance are usually lowest.

**Irish Cobbler.** **Green Mountain.**

**Early Rose.** **Spaulding Rose.**

**Early Northern.**

**PUMPKIN**

Oz. 15c.,  $\frac{1}{4}$  lb. 40c., lb. \$1.50

**Small Yellow Sugar.** Prolific, fine-grained and sweet. One of the best pie Pumpkins.

**Connecticut Field.** Large, round, orange yellow. A productive sort, principally for feed; not equal in quality to Large Cheese or Winter Luxury for pies.

**Large Cheese.** Cheese shape, creamy yellow color; flesh fine grained.

**King of Mammoths, Jumbo or Potiron.** One of the largest Pumpkins; slightly ribbed, skin salmon orange, flesh bright yellow.

**RADISH**

Pkt. 10c., oz. 15c.,  $\frac{1}{4}$  lb. 50c., lb. \$1.50

**Early Scarlet Globe.** One of the best general purpose varieties, equally valuable for hothouse forcing and for garden culture. The Radishes are globe-shaped, about an inch in diameter, and will be ready for use in from 25 to 30 days after planting of the seed.

**Strawberry.** A late introduction, which is particularly valuable for forcing. Skin red, flesh marked with red veins; small tops.

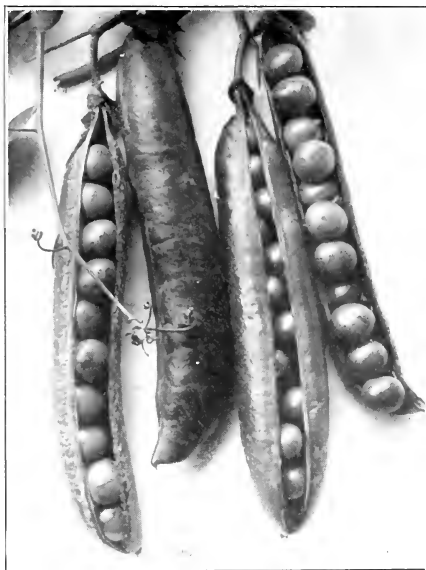
**Scarlet Turnip, White-tipped.** Used largely for early outdoor planting; bulbs are Turnip-shaped with a pronounced white tip.

**French Breakfast.** Olive-shaped variety, about  $1\frac{1}{2}$  in. long. A quick grower, deep scarlet color shading out to a slightly white tip.

**White Icicle.** Waxy white, long roots, tapering down from the shoulder. 5 to 6 in. long, with small tops. Flesh very crisp and tender.

**WINTER RADISHES**

**Round Black Spanish.** Roots are from 3 to 4 in. in diameter and possibly 5 to 6 in. in length; skin black like the Long Black Spanish.



PEAS, ALDERMAN

**RADISH—Continued**

**Scarlet China or Rose.** The roots are from 2 to 3 in. in diameter, and almost uniform in size the whole length, abruptly tapering to a small tap root; skin smooth, light scarlet or rose color.

**SALSIFY**

Commonly called Vegetable Oyster. The roots resemble small Parsley and grow best in light soil. The seed should be sown early in the season, covering it at least an inch deep. When the plants come up thin to 4 inches or 6 inches apart.

**Mammoth Sandwich Island.** Probably the best sort for the home garden or for market growing. The roots are large, smooth-skinned, with clear white flesh. Oz. 30c.,  $\frac{1}{4}$  lb. \$1.00, lb. \$3.00.



EARLY SCARLET GLOBE RADISH

# SPINACH

Oz. 15c.,  $\frac{1}{4}$  lb. 25c., lb. 75c.

**King of Denmark.** A rather slow growing Spinach but remains in nice condition from one to two weeks after some varieties have shot to seed. The plant greatly resembles Long Season. Leaves are thick and stand up well after cutting.

**Long Season.** A new and popular variety similar to Bloomsdale, with a broad and larger leaf, less curled, but will stand longer before bolting to seed.

**Monstrous Viroflay.** Suitable for either Spring or Fall sowing. Leaves thick, broad and nearly round. Dark color. One of the older types of Spinach on the thick leaf order.

**Juliana.** This is of the Long Season type, having a large, beautiful, crumpled leaf. It has that beautiful, rich, dark green color. Remarkable for its rapid, uniform growth and because it stands hot weather without bolting to seed longer than any other sort. Good for either Spring or Fall planting.

**Savoy Leaf or Bloomsdale.** This is early, hardy and one of the best for market or canning. Grows upright, of medium size, with broad, pointed, dark glossy green leaves, curled and wrinkled.

**New Zealand.** Differs in growth from the ordinary Spinach, as its plants may attain 3 ft. in height. The leaves and the stems are the portions used and may be picked frequently during the Summer. Pkt. 10c., oz. 20c.,  $\frac{1}{4}$  lb. 60c., lb. \$1.75.

**Perpetual.** A valuable addition to the Spinach family, producing green leaves in abundance close to the ground. Immediately one gathering has been made, fresh leaves appear, maintaining a supply long after other sorts are exhausted. Oz. 25c.,  $\frac{1}{4}$  lb. \$1.00.



VICTORIA SPINACH

# SQUASH

## SUMMER VARIETIES

**Summer Straightneck.** This is fast becoming the most used Summer Squash for market gardeners, as the necks do not break off. Oz. 20c.,  $\frac{1}{4}$  lb. 75c., lb. \$2.50.

**Giant Summer Crookneck.** The most popular sort. Larger and darker colored than other varieties. Vines are of bush habit, larger and more vigorous than Summer Crookneck. Fruit when mature about 18 in., with very warty surface. A favorite market garden sort. Pkt. 10c., oz. 15c.,  $\frac{1}{4}$  lb. 40c., lb. \$1.25.

**White Bush Scallop.** Very early, flat and scalloped. Creamy white color with comparatively smooth surface. Vigorous productive vines. Pkt. 10c., oz. 15c.,  $\frac{1}{4}$  lb. 35c., lb. \$1.00.

## FALL AND WINTER VARIETIES

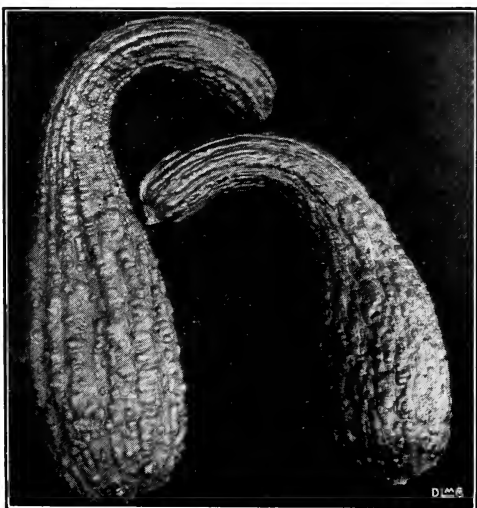
**Warted Hubbard.** The most popular Winter sort for market and general purpose use. The shape same as the rest of the Hubbard family, with a very dark green color, heavily warted. The flesh is very thick, fine grain, bright orange in color. Pkt. 10c., oz. 15c.,  $\frac{1}{4}$  lb. 40c., lb. \$1.25.

**Golden Hubbard.** Shaped like all the Hubbard family. The shell is a rich orange color and the flesh a deep orange of excellent quality. Pkt. 10c., oz. 15c.,  $\frac{1}{4}$  lb. 40c., lb. \$1.25.

**Boston Marrow.** Size and form like Hubbard, bright orange in color. Firm yellow flesh. Popular with canners and with bakers for pies. Pkt. 10c., oz. 15c.,  $\frac{1}{4}$  lb. 40c., lb. \$1.25.

**Delicious.** Top-shaped in form, medium size, dark green shell, orange colored flesh. Pkt. 10c., oz. 15c.,  $\frac{1}{4}$  lb. 40c., lb. \$1.25.

**Vegetable Marrow, English.** Oz. 15c.,  $\frac{1}{4}$  lb. 60c.



GIANT SUMMER CROOKNECK SQUASH



TOMATOES, LIVINGSTON'S BEAUTY

## TOMATO

**Marglobe.** The newest and finest Tomato, introduced by the U. S. Dept. of Agriculture. A very heavy yielder of fine large Tomatoes which have a small seed cavity and thick, firm meat. They ripen well up to the stem. Marglobe is almost 100 per cent resistant to blight and nailhead rust. Pkt. 25c., oz. 75c.,  $\frac{1}{4}$  lb. \$2.75.

**Earliana.** Very early deep scarlet variety. Pkt. 15c., oz. 40c.,  $\frac{1}{4}$  lb. \$1.50, lb. \$5.00.

**John Baer.** Resembles Bonnie Best, maturing about the same time. Pkt. 10c., oz. 35c.,  $\frac{1}{4}$  lb. \$1.00, lb. \$3.50.

**Early Sunrise.** A very fine early sort, 3 to 5 days earlier than Earliana. Similar habits, but a smoother strain. Pkt. 25c., oz. 75c.,  $\frac{1}{4}$  lb. \$2.75, lb. \$10.00.

**Bonnie Best.** One of the best early varieties. Ripens a little later than Earliana, with bright red, smooth fruit, ripening even and close up to the stem. While not one of the earliest, it is one of the best all-around Tomatoes. Pkt. 10c., oz. 40c.,  $\frac{1}{4}$  lb. \$1.50, lb. \$5.00.

**Chalk's Early Jewel.** Bright red fruit, ripens even, is solid and ships well. Holds its size well throughout the season which makes it a very heavy yielder. Pkt. 10c., oz. 35c.,  $\frac{1}{4}$  lb. \$1.00, lb. \$3.50.

**Matchless.** Fine, standard main crop. Large, smooth solid fruit of a good red color. Ripens a little later than Stone. Pkt. 10c., oz. 30c.,  $\frac{1}{4}$  lb. 75c., lb. \$2.75.

**Dwarf Stone.** Dwarf vine, very vigorous and productive. Fruit bright red, smooth and solid. The largest fruiting of the dwarf vine varieties, and matures with the later sorts. The upright habit of growth in this Tomato enables one to set the plants more closely together. Pkt. 20c., oz. 50c.,  $\frac{1}{4}$  lb. \$1.75, lb. \$6.00.

**Ponderosa.** Very large fruit. Strictly a home garden sort. Pkt. 25c., oz. 60c.,  $\frac{1}{4}$  lb. \$2.00, lb. \$7.50.

**New Stone.** This is the old standard late variety and is still holding great popularity. Produces a large crop of big, bright scarlet fruit. Pkt. 10c., oz. 40c.,  $\frac{1}{4}$  lb. \$1.25, lb. \$4.00.

**Stirling Castle.** A very superior variety for either forcing or outdoor culture. Very heavy cropper, of medium size, smooth and round. Color a clear red. Remarkable for its free setting qualities and delicious flavor. Pkt. 15c.,  $\frac{1}{4}$  oz. 30c.

**Golden Queen.** The fruits are large and smooth, of bright golden yellow color, sometimes with a slight blush of red. They are as smooth and well shaped as the best of the red varieties and are of superior flavor. Oz. 35c., 2 oz. 60c.,  $\frac{1}{4}$  lb. \$1.00.

### SMALL FRUITING TOMATOES

Pkt. 10c.,  $\frac{1}{2}$  oz.  
35c., oz. 60c.,  
 $\frac{1}{4}$  lb. \$1.75

Red Pear

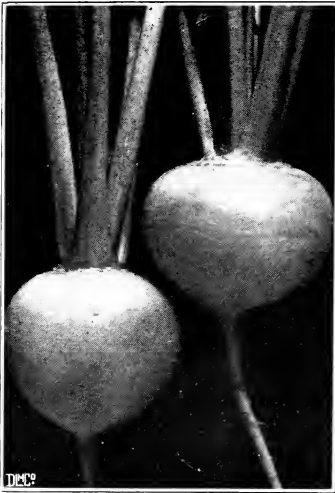
Yellow Pear

Red Plum

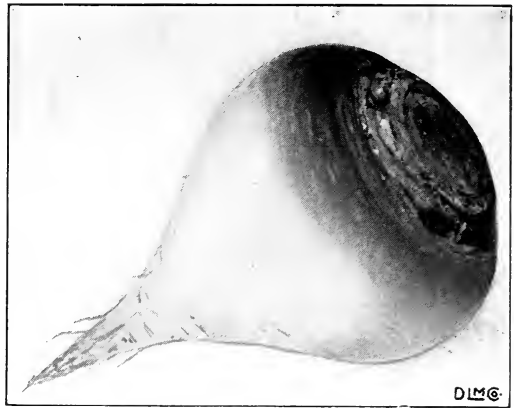
Yellow Plum



YELLOW PLUM TOMATOES



TURNIP GOLDEN BALL



RUTABAGA LONG ISLAND IMPROVED

## TURNIP

### WHITE FLESH SORTS

**Pomerian White Globe.** One of the most productive kinds and in good, rich soil the roots will frequently grow to 12 lbs. in weight. The roots are globe shaped or slightly flattened; skin very white and smooth. This sort is used for stock feeding and is also good for table use if pulled when the roots are not more than 4 to 5 in. in diameter. Where the Winters are mild the tops are used for greens. Pkt. 10c., oz. 15c., 2 ozs. 20c.,  $\frac{1}{4}$  lb. 25c., lb. 75c.

**Early Purple Top Strap Leaf.** Well known early sort. Largely used in all sections. Oz. 15c.,  $\frac{1}{4}$  lb. 40c.

**White Egg.** Early oval sort; smooth, clean, white roots which grow half out of the ground; small tops; flesh fine grained and sweet. Extra selected stock. Oz. 15c.,  $\frac{1}{4}$  lb. 40c.

**Red Top White Globe.** It has the particular feature of having a very bright red top which goes well down on the Turnip, making it very attractive in appearance. Pkt. 10c., oz. 15c.,  $\frac{1}{4}$  lb. 50c., lb. \$2.00.

### YELLOW FLESHED SORTS

**Yellow Globe.** A splendid sort for general crop; good keeper; bright yellow flesh. Oz. 15c.,  $\frac{1}{4}$  lb. 40c.

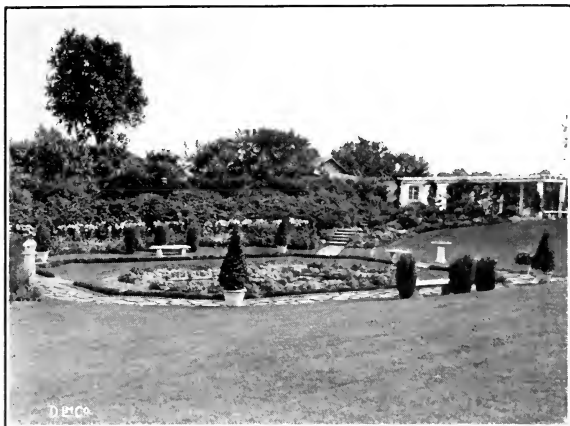
**Golden Ball.** Delicately flavored; small top; medium sized root; round and very smooth; very deep yellow; crisp and firm. Oz. 15c.,  $\frac{1}{4}$  lb. 40c.

## RUTABAGA

**Long Island Improved.** An excellent variety of Rutabaga for table use or for stock feed; the roots are oval in form, with purple tops and yellow flesh. Oz. 15c.,  $\frac{1}{4}$  lb. 40c.



TURNIP WHITE EGG



## LAWN GRASS SEEDS

For Lawns, Golf Links,  
City Parks,  
Private Estates

### SHADY SPOT MIXTURE

This is a selection of fine grasses which thrive in the shade of trees or buildings where there is little sun. Lb. 60c., 20 lbs. \$11.00, 100 lbs. \$53.00.

### FANCY LAWN GRASS MIXTURE

This mixture contains the best grasses suited for fine lawns, tennis courts and greens, forming a thick velvety surface. Lb. 60c., 20 lbs. \$11.00, 100 lbs. \$53.00.

### SPECIAL LAWN GRASS MIXTURE

A thoroughly first-class mixture made of the best and cleanest grades of those varieties of seed best adapted to make a permanent lawn. Lb. 50c., 20 lbs. \$9.25, 100 lbs. \$45.00.

## FIELD SEEDS

You will readily understand that grass and field seeds fluctuate a great deal in price, and we cannot issue a catalog good for a year on an article of this kind. Prices quoted here are the ruling prices of January, 1932. These prices should be the current prices for the next four months.

### CLOVERS

**WHITE CLOVER.** Used in lawns and in pastures because of its strong and sturdy growth. It should be sown at the rate of 10 lbs. to the acre, getting into the ground in April or in September. The Clover seed we offer for this year has been thoroughly cleaned, is as free from foreign substances as it can possibly be made, and of the highest percentage of germination. Lb. 65c., 10 lbs. \$6.25, 25 lbs. \$15.50, 100 lbs. \$60.00.

**ALSIKE.** One of the most hardy of all Clovers. Will stand well on moist soil. Domestic seed. Lb. 55c.

**MEDIUM RED (Domestic Seed).** This is the most important and most commonly used variety of all the Clovers. Can be sown in Spring or Fall. We recommend Spring sown Clover unless able to sow in August, as small Clover seeds are apt to Winterkill badly. Lb. 45c.

**ALFALFA, COMMON (Domestic Seed).** The plants grow 18 to 36 in. high. Furnishes excellent pasturage for hogs, but not recommended for pasturing other stock. In the form of hay, Alfalfa is considered the best stock feed known. Needs one season to become established. Sow in Northern latitudes from June to August. Lb. 45c.



ALFALFA

**ALFALFA, GRIMM (Domestic Seed).** This variety is superior to regular Alfalfa on account of its extreme hardness, withstanding all sorts of climatic conditions in Northern latitudes. Flowers variegated in color, with purple predominating. Lb. 65c.

# GRASS SEED

## For Pasture and Mowing

**ENGLISH RYE GRASS** (*Lolium perenne*). Produces a strong growth in 4 or 5 weeks after sowing. It cures into a hay that is rather hard, but having a sweet flavor and much relished by cattle and horses. Sow 60 lbs. to the acre. Lb. 30c., 100 lbs. \$22.00.

**KENTUCKY BLUE GRASS** (*Poa pratensis*). A very widely distributed species and without a rival as a pasture grass. Being of perennial habit, it will when established, last indefinitely. Lb. 45c., 100 lbs. \$40.00.

**Rough Stalk Meadow Grass** (*Poa trivialis*). Makes an excellent turf and is used quite extensively in lawn and fairway mixtures, especially under trees or in shaded places. No doubt the best known grass for shade in this section of the country. Lb. 40c., 25 lbs. \$8.75.

**RED TOP, FANCY CLEANED** (*Agrostis vulgaris*). A highly recommended grass for permanent pasture and as meadow grass for hay. Red Top is especially valuable for sour and acid soils and meadow lands. Use 14 to 16 lbs. to acre. Lb. 30c., 100 lbs. \$28.00.

**TIMOTHY, or HERB GRASS** (*Phleum pratense*). The standard hay of commerce. The excellent quality of the hay and the ease of culture make it valuable. It is adapted to most soils, but succeeds best on moist loam and clay. Timothy sown alone requires about 20 lbs. per acre; when sown with Red Clover use 15 lbs. Timothy and 5 lbs. Red Clover. Lb. 20c., 100 lbs. \$12.00.



ORCHARD GRASS

**SOUTH GERMAN BENT** (*Agrostis stolonifera*). Called Creeping Bent. Very fine leaved and of creeping habit. Forms close, dense turf. Used on fine lawns and golf greens. Lb. \$1.25.

**ORCHARD GRASS** (*Dactylis glomerata*). One of the most desirable pasture grasses for stock and for shady places. Lb. 30c., 100 lbs. \$26.00.

**RED FESCUE** (*Festuca rubra*). It thrives on dry, sandy soils and remarkably well in shade, forming a good turf surface, especially valuable for lawn and golf course. It is the only fine-leaved Fescue forming a dense, continuous turf. Lb. 50c., 25 lbs. \$10.00.

## FARM SEEDS

*Prices on all grass and grain seeds subject to market fluctuations*

**Prices on application**

**LINCOLN OATS.**

**CANADA FIELD PEAS.**

**BUCKWHEAT, JAPANESE.**

**RAPE, DWARF ESSEX**

**VETCH, WINTER or HAIRY.**

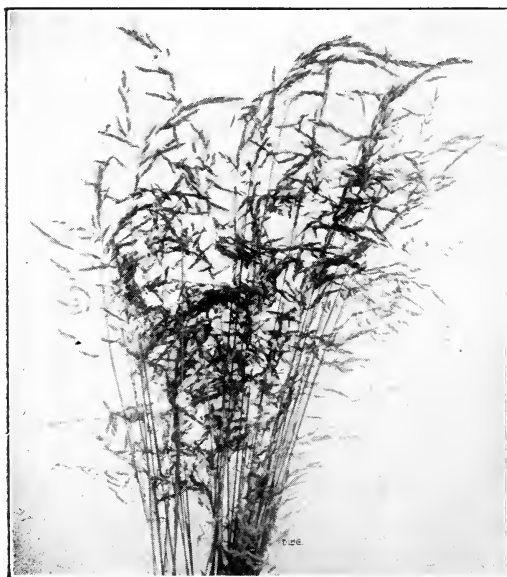
**RYE, FALL or WINTER.**

## MILLET

**JAPANESE**

**HUNGARIAN.**

**GERMAN.**



KENTUCKY BLUE GRASS





ABOVE IS SHOWN A GARDEN OF ANNUALS AND PERENNIALS BLENDED TOGETHER VERY EFFECTIVELY

## ANNUAL FLOWER SEEDS

### AGERATUM

One of the best Summer blooming plants grown from seed. They are rapid growers, early and constant bloomers. During the hot, dry Summer months their bright flowers are produced in the greatest profusion. The taller sorts are useful for cutting.

**Mexicanum caeruleum.** 18 in. Beautiful soft lavender blue, of free branching habit. Pkt. 10c.

**Little Blue Star.** Pkt. 15c.

**Blue Perfection.** Pkt. 15c.

### ALYSSUM

**Little Gem.** Annual plants about 4 in. high, and are covered with a mass of white flowers from Spring to Autumn. Pkt. 10c.,  $\frac{1}{4}$  oz. 25c.

### ANCHUSA

**Capensis** (Summer Forget-me-not). Best treated as an annual; height 18 in.; blooms freely all Summer. Fine for cut flowers. Pkt. 10c., oz. 50c.

### ARCTOTIS (*African Daisy*)

**Grandis.** Bushy annual plants, producing the entire season, on long stems, large, Daisy-like flowers, pure white on the upper surface, the reverse side of petals lilac blue. 2 ft. Pkt. 10c.,  $\frac{1}{4}$  oz. 25c.

### AMARANTHUS

Decorative foliage plants, easily raised from seed, either by starting them early indoors or sown outdoors in May.

**Sunrise.** Foliage bronzy crimson, tipped carmine. Pkt. 15c.,  $\frac{1}{4}$  oz. 75c.

**Tricolor splendens** (Josephs-coat). Foliage green. Pkt. 15c.,  $\frac{1}{4}$  oz. 75c.

### ANTIRRHINUM (*Snapdragon*)

**MAXIMUM GIANT FLOWERED**—32 inches

These are a wonderful advance in size over all other varieties, each bloom measuring 2 to 3 inches across.

**Appleblossom.** Rosy pink, white throat.

**Bunch of Lilacs.** Deep lilac.

**Copper King** (Indian Summer). Velvety copper scarlet.

**Defiance.** Brilliant scarlet.

**Fire Flame.** Dark purple and yellow with white throat.

**Gotelind.** Light copper, old rose throat.

**Golden Queen.** Golden yellow, lilac rose throat.

**Old Gold.** Golden yellow, old rose throat.

**Ruby.** Velvety ruby red.

**The Rose.** Rose pink.

**Snowflake.** Pure snow white, yellow tube.

**Wallflower Colors.** Brown with violet throat.

Each of the above, pkt. 15c.

**Maximum or Giant Flowered Mixed.** All the above and others.  $\frac{1}{8}$  oz. 30c., pkt. 15c.



ALYSSUM



BALSAM



CALENDULA (POT MARIGOLD)



CENTAUREA CYANUS (CORNFLOWER)

**ASTERS**

We have not attempted to list all of the varieties of Asters which are on the market today, as the number is altogether too large for anyone excepting the professional grower or the enthusiastic fancier. The average gardener will get just as much real fun and fully as many handsome flowers, from the varieties which we catalog, as though we filled up a dozen or more pages with an elaborate list.

**Queen of the Market.** White, pink, blue, crimson, purple. Pkt. 10c., ¼ oz. 45c.

**Late Branching.** White, pink, blue, rose, purple. Pkt. 10c., ¼ oz. 45c.

**Giant Comet.** White, pink, rose, crimson, purple, lavender. Pkt. 10c., ¼ oz. 45c.

**King.** White, violet, pink, crimson, lavender, rose. Pkt. 10c., ¼ oz. 50c.

**Single.** White, pink, blue, red. Pkt. 10c., ¼ oz. 50c.

**NEW ASTERS. GIANTS OF CALIFORNIA**

New type of Aster that flowers exceptionally large, making flowers 5 inches across. It is distinctive of the Ostrich Plume type, with branching habit and long stems, growing to a height of 3½ ft.

- Pure White .....\$0.25
- Peach Blossom. Opens as a white and darkens with age..... .25
- Light Blue. Delicate blue..... .25
- Light Purple..... .25
- Deep Rose. American Beauty Rose color.... .25
- Dark Purple..... .25

**BALSAM**

**Camellia Flowered.** The old-fashioned Lady-slipper. Annual. The plants are about 2 ft. high, will grow well in reasonable good soil and supply great masses of brilliantly colored blooms. Yellow, scarlet, pink, white, violet, and all colors mixed. Pkt. 10c., ¼ oz. 50c.

**BEGONIA**

**FIBROUS-ROOTED BEGONIAS**

Begonias offered under this head have attractive foliage, among the most desirable for flowering in the house. Bedding in partly shaded locations or under full sunshine outdoors continue in full bloom throughout the season.

**Erfordi.** Rosy carmine. Pkt. 25c.

**Vernon.** Brilliant rich red, bronze leaf. Pkt. 25c.

**Prima Donna.** Rose shading to carmine. Pkt. 25c.

**BRACHYCOME (Swan-river-daisy)**

A delicate, dwarf, half hardy annual, effective for edging, beds or rustic baskets. Produces an abundance of Daisy-like flowers about an inch in diameter and in shades from dark blue to nearly white. Pkt. 10c., oz. \$1.00.



ASTER, LATE BRANCHING



CELOSIA CHILDSI (See page 24)

**BROWALLIA**

Profuse blooming plants, continuing throughout the Summer, studded with blue and white flowers, growing freely in any rich soil. Half hardy annual.

**Speciosa majus.** Splendid large, blue flowers.

Pkt. 15c., 1-32 oz. \$2.50.

**Elata Mixed.** Pkt. 10c., oz. 75c.

**CALLIOPSIS**

Useful annual, good for cut flower or border.

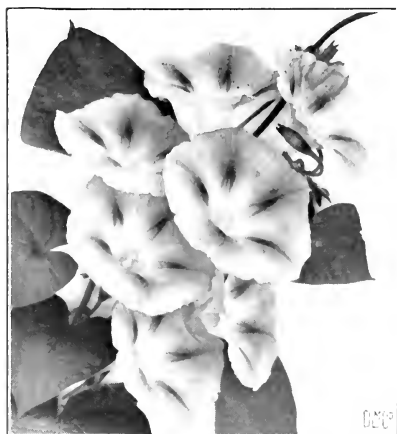
**Coronata maxima.** Height 24 in. Large, single yellow flowers. Pkt. 10c.,  $\frac{1}{4}$  oz. 25c.

**Golden Ray.** 6 to 8 in. Golden yellow, dark brown center. Pkt. 10c.,  $\frac{1}{4}$  oz. 25c.

**Radiata tigrinia.** 6 to 8 in. Large reddish brown. Pkt. 10c.,  $\frac{1}{4}$  oz. 25c.

**Crimson King.** 24 in. Rich crimson. Pkt. 10c.,  $\frac{1}{4}$  oz. 25c.

**Drummond, Golden Wave.** 2 ft. Flowers yellow with a circle of rich crimson brown around the eye.  $\frac{1}{8}$  oz. 25c., pkt. 10c.



CONVOLVULUS (MORNING-GLORY) (See page 24)

**CANDYTUFT**

Seed sown in April flowers from July to September, and some of the sorts until frost. All the varieties are easy to cultivate. Single plants look well and bloom profusely. Hardy annuals. 1 ft. high.

**Empress White.** Pkt. 10c.,  $\frac{1}{2}$  oz. 40c.

**Pink, Lavender, Rose.** Pkt. 10c.,  $\frac{1}{2}$  oz. 40c.

**CALENDULA (Pot-marigold)**

Showy, free flowering, hardy annuals growing in any good garden soil, producing a fine effect in beds or mixed borders and continuing in bloom until killed by hard frosts.

**The Ball (Florists' Forcing Strain).** A selection from Orange King and now finest of all bright orange with lighter center. Pkt. 10c., oz. \$1.00.

**Orange King.** Selected. Pkt. 10c.,  $\frac{1}{4}$  oz. 30c.

**Sulphur Yellow.** Pkt. 10c.,  $\frac{1}{4}$  oz. 30c.

**Prince of Orange.** Pkt. 10c.,  $\frac{1}{4}$  oz. 30c.

**Mixed.** Pkt. 10c.,  $\frac{1}{4}$  oz. 25c.

**CENTAUREA**

Under this heading we have the well known Cornflower, Blue Bottle, Ragged Sailer, Bachelor Button, Sweet-sultan, Dusty-miller, etc.

**Cyanus (Cornflower).**

**Double Blue, Double Pink, Double White.**  
Pkt. 10c.,  $\frac{1}{4}$  oz. 25c.

**Imperialis (Giant Sweet-sultan).**

**Amaranth Red.** Pkt. 10c., oz. \$1.50.

**Delicate Lilac.** Pkt. 10c., oz. \$1.50.

**Deep Lavender.** Very sweet scented. Pkt. 10c., oz. \$1.50.

**Pure White.** Best for cutting. Pkt. 10c., oz. \$1.50.

**Finest Mixed Colors.** Pkt. 10c., oz. \$1.00.

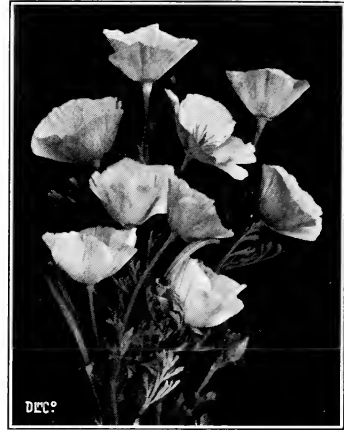
**Candidissima.** Pkt. 25c.

**Gymnocarpa.** Pkt. 25c.

COSMOS, GIANT EARLY FLOWERING  
(See page 24)



DIMORPHOTHECA (AFRICAN DAISY)



ESCHSCHOLTZIA (CALIFORNIA POPPY)

## CELOSIA

The Cockscombs are free blooming annuals which make splendid border plants and likewise can be grown in pots.

**Cristata nana, Empress Red.** Pkt. 25c.  
**aurea.** Pkt. 25c.  
**rosea.** Pkt. 25c.

**Plumosa, Crimson.** Pkt. 25c.  
**Yellow.** Pkt. 25c.

**Childsi** (Chinese Woolflower, Feathered Celosia). Plants are from 2 to 3 ft. high; each branch is crowned with a head of rich crimson flowers which much resemble a silky, wool material. Effective in beds and borders. Pkt. 25c.

**Chinese Woolflower, Deep Rose.** This variety is exactly like the original Chinese Woolflower, only the color is a deep rose instead of scarlet. Pkt. 25c.

## CHRYSANTHEMUM, ANNUAL

**Morning Star.** Pkt. 10c.,  $\frac{1}{4}$  oz. 30c.  
**Evening Star.** Pkt. 10c.,  $\frac{1}{4}$  oz. 30c.  
**Double White.** Pkt. 10c.,  $\frac{1}{4}$  oz. 30c.  
**Eastern Star.** Pkt. 10c.,  $\frac{1}{4}$  oz. 30c.  
**Double Yellow.** Pkt. 10c.,  $\frac{1}{4}$  oz. 30c.

## CARNATION

**Vienna Dwarf Mixed.** Pkt. 25c.

## CLARKIA

**Salmon Queen.** Pkt. 15c.

## CONVOLVULUS (*Morning-glory*)

**Fine Mixed.** Pkt. 10c.,  $\frac{1}{4}$  oz. 20c.

## COSMOS

**Giant Early Flowered.** White, pink, crimson. Pkt. 15c.,  $\frac{1}{4}$  oz. 25c.

**Lady Lenox.** Pink, white, crimson. Pkt. 25c.

**Early Double.** Pink, white, crimson. Pkt. 25c.

**Mixed.** Pkt. 10c.

## DIANTHUS

This class of Pinks are usually treated as hardy annuals. They flower early in Summer and continue until frost; excellent for small beds or edgings, flowering profusely. Hardy biennial.

**Heddeewigi, Mixed.** Pkt. 15c.

## DIDISCUS (*Blue Lace Flower*)

This beautiful annual came recently from Australia and has become very popular. Blooms profusely from July until frost. An excellent cut flower Pkt. 10c., oz. \$1.75.

## DAHLIA

**Good Mixed.** Pkt. 25c.

## DIMORPHOTHECA (*African Daisy*)

**Aurantiaca.** Golden. Pkt. 10c., oz. \$1.50.

**Aurantiaca Hybrids, Mixed.** Pkt. 10c., oz. \$1.50.

## ESCHSCHOLTZIA (*California Poppy*)

**Yellow.** Pkt. 10c., oz. 50c.

**Hybrid Mixed.** Pkt. 10c., oz. 50c.

**Hunnemannia** (Bush Eschscholtzia).  $1\frac{1}{2}$  ft. high, of bushy habit, have large, butterfly yellow, Poppy-like blossoms. Pkt. 10c.,  $\frac{1}{4}$  oz. 50c.

## EUPHORBIA

**Marginata variegata** (Snow-on-the-mountain).

The leaves are light green and white margined. Pkt. 10c.,  $\frac{1}{4}$  oz. 50c.

**GAILLARDIA**

- Lorenziana.** Pkt. 15c.,  
**Amblyodon.** Red. Pkt. 15c.

**GODETIA**

- Fine Mixed.** Pkt. 10c.

**GOURDS, ORNAMENTAL**

- Mixed.** Pkt. 10c.

**GYPSOPHILA** (*Babysbreath*)

Delicate free flowering plants covered with a profusion of fine, star-shaped flowers.

- Elegans.** White. Pkt. 10c., oz. 50c.

**HELICHRYSUM** (*Strawflower*)

- Coppery Red.** Pkt. 15c.,  $\frac{1}{4}$  oz. 30c.  
**Golden Ball.** Pkt. 15c.,  $\frac{1}{4}$  oz. 30c.  
**Rose Queen.** Pkt. 15c.,  $\frac{1}{4}$  oz. 30c.  
**Scarlet.** Pkt. 15c.,  $\frac{1}{4}$  oz. 30c.

**HELIOTROPE**

- Fine Mixed.** Pkt. 25c.

**HOLLYHOCK**

- Mixed.** Annual. Pkt. 15c.

**HONESTY** (*Lunaria*)

- Pkt. 15c.

**KOCHIA**

- Childsi** (Summer-cypress). Pkt. 10c.



GAILLARDIA

**LARKSPUR**

- Hyacinth Flowered.** White, pink, flesh, rose, dark blue, light blue. Pkt. 10c.,  $\frac{1}{4}$  oz. 30c.

**LOBELIA**

- Crystal Palace Blue.** Pkt. 25c.  
**Hungaria.** Trailing blue. Pkt. 25c.

**LUPINE, ANNUAL**

- White, Blue, Pink.** Pkt. 15c.

**MARIGOLD**

**Tall African Giant Flowered:**

- Orange Queen.** Selected. Pkt. 10c.,  $\frac{1}{4}$  oz. 35c.

- Lemon Queen.** Selected. Pkt. 10c.,  $\frac{1}{4}$  oz. 35c.

- Mixed.**  $\frac{1}{4}$  oz. 30c.

- Pride of the Garden.** Pkt. 10c.,  $\frac{1}{4}$  oz. 35c.

**Dwarf French:**

- Gilt Edge.** Pkt. 10c.,  $\frac{1}{4}$  oz. 35c.

- Legion of Honor.** Pkt. 10c.,  $\frac{1}{4}$  oz. 35c.

**MIGNONETTE**

- Defiance.** Pkt. 10c.,  $\frac{1}{4}$  oz. 30c.

- Giant White.** Pkt. 10c.,  $\frac{1}{4}$  oz. 30c.

**MIRABILIS** (*Marvel of Peru, Four o'clock*)

- Pkt. 10c., oz. 40c.

**MYOSOTIS** (*Forget-me-not*)

- Victoria.** Pkt. 15c.,  $\frac{1}{4}$  oz. 75c.

**NASTURTIUMS**

- Tall Mixed.** Pkt. 10c.,  $\frac{1}{4}$  lb. 35c.

- Dwarf Mixed.** Pkt. 10c.,  $\frac{1}{4}$  lb. 35c.

**NEMESIA**

- Blue.** Pkt. 10c.,  $\frac{1}{8}$  oz. \$1.00.

- Orange.** Pkt. 10c.,  $\frac{1}{8}$  oz. \$1.00.

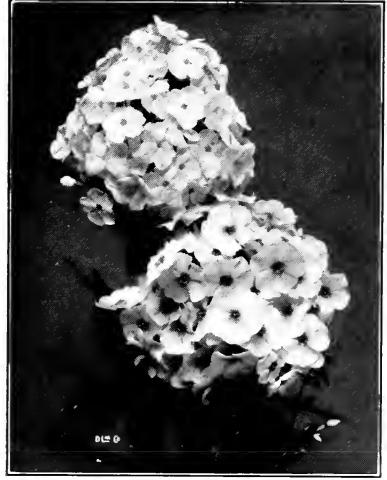


HOLLYHOCK

D.C.C.



PETUNIA, GIANTS OF CALIFORNIA



PHLOX

## NICOTIANA

**Affinis.** White. Pkt. 10c.  
**Crimson King.** Pkt. 10c.

## NIGELLA

**Miss Jekyll.** Blue. Pkt. 10c.

## PANSY

**Improved Swiss Giant.** The flowers are gigantic size, perfectly round and exhibit shades previously unknown in this family. Pkt. 25c.,  $\frac{1}{4}$  oz. \$4.00.

## PENNISETUM

**Longistylum.** Fancy grass. Pkt. 25c.  
**Ruppelianum.** Pkt. 25c.

## PETUNIA

**Dwarf Giants of California, Mixed.** Pkt. 50c.  
**Double Mixed.** Pkt. 25c.  
**Balcony White.** Pkt. 15c.  
**Blue, Red, Purple, Mixed.** Pkt. 15c.  
**Rose of Heaven.** Pkt. 15c.,  $\frac{1}{8}$  oz. 50c.  
**Rosy Morn.** Selected. Pkt. 15c.  
**Royal Purple.** Pkt. 25c.

## PHLOX

This splendid genus of plants is unrivaled for richness of color, profusion of blossoms, length of duration in bloom and whether in clumps or masses, look equally beautiful.

**Nana compacta.**

**Yellow, Salmon Rose, Fireball.** Pkt. 10c.,  $\frac{1}{8}$  oz. 50c.

**Grandiflora.**

**White, Chamois, Rose, Yellow, Scarlet, Violaacea.** Pkt. 10c.,  $\frac{1}{8}$  oz. 50c.

## POPPY

**Shirley, Mixed.** Pkt. 10c.,  $\frac{1}{4}$  oz. 30c.  
**Double Annual Poppies.**  
**Double Pink.** Pkt. 10c.,  $\frac{1}{4}$  oz. 30c.  
**Scarlet, Lilac, Purple.** Pkt. 10c.,  $\frac{1}{4}$  oz. 30c.

## PORTULACA

These brilliant and popular hardy annuals are of the easiest culture, luxuriant in an exposed sunny situation, and producing throughout the Summer their various colored flowers in the greatest profusion.

**Finest Double Mixed.** Pkt. 10c.,  $\frac{1}{8}$  oz. 60c.

## RICINUS (*Castor-bean*)

Large, luxuriant, rapid growing foliage. Annual, with palm-like leaves; much used for sub-tropical effects on the lawn or for centers of beds of foliage plants.

**Zanzibariensis.** Pkt. 10c.,  $\frac{1}{4}$  oz. 20c., oz. 40c.

**Gibsoni.** Pkt. 10c.,  $\frac{1}{4}$  oz. 20c.

**Cambodgensis.** Pkt. 10c.,  $\frac{1}{4}$  oz. 20c.

## SALPIGLOSSIS

Annual. About 18 inches high, bearing throughout the season large flowers of many beautiful colors, all exquisitely veined and laced.

**Crimson, Black, Gold, Violet, Blue, Rose.**  
 Each, pkt. 15c.

## SALVIA (*Flowering Sage*)

Splendid ornamental plants for outdoor decorations. Their beautiful spikes of brilliant scarlet flowers being produced in great profusion from July until October. Half hardy annuals.

**America (Globe of Fire).** Very dwarf and uniform, the bushy plants are only 15 in. tall, with spikes in profusion rising 10 in. above the plant; exceptionally valuable for beds, borders or edging. Pkt. 20c., oz. \$5.00.

**Farinacea.** Light Blue. Pkt. 25c.,  $\frac{1}{8}$  oz. 50c.

**Splendens.** Scarlet, free bloomer; 3 ft. tall, old favorite variety. Pkt. 10c., oz. \$2.50.

**Splendens "Bonfire" (Nana compacta erecta).** Growing in a compact bush about 2 ft. high. Its erect spikes of flowers of brilliant scarlet stand clear above the dark green foliage and completely cover the plant. Pkt. 10c., oz. \$3.50.



STOCK



VERBENA



SCHIZANTHUS (BUTTERFLYFLOWER)

**SANVITALIA**

*Procumbens.* Pkt. 10c.

**SCABIOSA** (*Mourning Bride*)

Beautiful annuals with large, double flowers on long stems; fine for cutting; various colors. Height 2½ feet. They bloom from July until frost.

**Black Prince.** Pkt. 10c., ¼ oz. 35c.

**Cherry Red.** Pkt. 10c., ¼ oz. 35c.

**Fiery Cross.** Pkt. 10c., ¼ oz. 35c.

**Flesh Pink.** Pkt. 10c., ¼ oz. 35c.

**Azure Blue.** Pkt. 10c., ¼ oz. 35c.

**Rose.** Pkt. 10c., ¼ oz. 35c.

**White.** Pkt. 10c., ¼ oz. 35c.

**SCHIZANTHUS** (*Butterflyflower*)

**Grandiflorus Hybrids.** Extra select greenhouse strain, handsome marked large flowering on white, buff or purple ground. Pkt. 25c., ¼ oz. \$1.75.

**Wisetonensis.** A variety of rose and amber shades, excellent for potting or outdoor. Pkt. 25c., ¼ oz. \$1.75.



SCABIOSA (MOURNING BRIDE)

**STATICE**

Our annual Statice is not only a beautiful flower in the border, but dries retaining its true colors, which are rare among Everlastings, and have come to be indispensable in making Winter bouquets. **Blue, White, Rose, Yellow.** Pkt. 10c., ¼ oz. 50c.

**STOCK**

**Dwarf, German, Ten-week, Double.**

**Rose.** Pkt. 15c., ⅓ oz. 75c.

**White, Mauve, Red, Blue.** Pkt. 15c., ⅓ oz. 75c.

**LARGE FLOWERING**

The Stocks represent all the desirable qualities of a flower. The plants have good habit, fine dull or glossy leaves. The flowers appear on long, stiff stalks like small rosettes, are exceedingly fragrant and range through a most complete scale of all the soft and distinct shades.

**Bismarck.** 2½ ft. If sufficient room is given, the plants develop to enormous dimensions, forming magnificent bushes with long and large flower stalks. The best variety for greenhouse use.

**White, Appleblossom, Gold Ball, Flesh, Golden Rose, Chamois, Blood Red, Lilac, Lavender, Dark Blue.** Pkt. 25c.

**SUNFLOWER**

**Double Red.** Pkt. 10c., ¼ oz. 25c.

**Mixed.** Pkt. 10c., ¼ oz. 25c.

**Cucumerifolius Orion** (Single Cut-and-come-again). Pkt. 10c.

**TORENIA**

**Fournieri.** Pkt. 15c.

**VERBENA**

A low growing annual, profuse in its blooms, ranging from brilliant and startling colors to soft and delicate tints. The following is a magnificent new strain of the *Hybrida grandiflora* Verbena with immense trusses and free flowering.

**Mammoth White, Blue, Pink, Red Defiance.** Pkt. 15c. and 50c.

## The Choicest Spencer Sweet Peas

New names of Spencer Sweet Peas are appearing so rapidly that to know them and what to select requires considerable time in experimental trials. Many of the sorts brought out only a few years ago have been dropped, while others are still unsurpassed. The newest are not always the best, and so this sifting process goes on each year. In the list below will be found a wide range of varieties, each having merits that make it worthy of a place in a list of the best Spencers. Our stock is grown with great care and has proved itself of the finest quality that is grown.

- Orchid Flowering Spencer Mixed.** Pkt. 25c., lb. \$3.50.  
**Hawlmarm Lavender.** Pkt. 10c., oz. 50c.  
**Hawlmarm Pink.** Pkt. 10c., oz. 50c.  
**Hawlmarm Maroon.** Pkt. 10c., oz. 50c.  
**Jack Cornwall.** Violet. Pkt. 10c., oz. 50c.  
**Picture.** Flesh pink and apricot. Pkt. 10c., oz. 50c.  
**Royal Scot.** Scarl.t. Pkt. 10c., oz. 50c.  
**Tangerine.** Salmon, orange. Pkt. 10c., oz. 50c.  
**Appleblossom.** Pkt. 10c., oz. 50c.  
**Asta Ohn.** Pinkish lavender. Pkt. 10c., oz. 50c.  
**Aurora.** Orange, rose striped. Pkt. 10c., oz. 50c.  
**Blue Monarch.** Pkt. 10c., oz. 50c.  
**Countess Spencer.** Rose. Pkt. 10c., oz. 50c.  
**Edith Taylor.** Salmon pink. Pkt. 10c., oz. 50c.  
**Fiery Cross.** Intense orange scarlet. Pkt. 10c., oz. 50c.  
**Florence Morse.** Blush pink. Pkt. 10c., oz. 50c.  
**King White.** Pkt. 10c., oz. 50c.  
**Margaret Atlee.** Rosy salmon. Pkt. 10c., oz. 50c.  
**Rosabelle.** Fine rose. Pkt. 10c., oz. 50c.  
**Nubian.** Chocolate. Pkt. 10c., oz. 50c.

### INOCULATE YOUR PEAS WITH STIMUGERM



SWEET PEAS

## ZINNIA, NEW GIANTS

Annual. Recently greatly improved in size, beauty and brilliancy; of branching habit and superb colors; continues in bloom a long time; very effective in beds, groups or mixed borders.

### Dahlia Flowered.

- Dream.** Pkt. 15c.,  $\frac{1}{4}$  oz. 60c.  
**Old Rose.** Pkt. 15c.,  $\frac{1}{4}$  oz. 60c.  
**Golden State.** Pkt. 15c.,  $\frac{1}{4}$  oz. 60c.  
**Scarlet Flame.** Pkt. 15c.,  $\frac{1}{4}$  oz. 60c.  
**Exquisite.** Pkt. 15c.,  $\frac{1}{4}$  oz. 60c.  
**Crimson Monarch.** Pkt. 15c.,  $\frac{1}{4}$  oz. 60c.  
**Oriole.** Pkt. 15c.,  $\frac{1}{4}$  oz. 60c.  
**Polar Bear.** Pkt. 15c.,  $\frac{1}{4}$  oz. 60c.  
**Buttercup.** Pkt. 15c.,  $\frac{1}{4}$  oz. 60c.  
**Purple Prince.** Pkt. 15c.,  $\frac{1}{4}$  oz. 60c.  
**Giant Flowering, Mixed.** Pkt. 10c.,  $\frac{1}{4}$  oz. 30c., oz. \$1.00.  
**Dwarf Mexican Mixed.** Pkt. 15c.

## TUBEROSE

The flowers of this well known tuberous rooted plant are waxy white, double and exceedingly fragrant. They are very useful in bouquets and house decoration.

If early flowers are wanted fill 5 inch pots half full of well rotted cow manure and the remainder with good, rich, sandy soil. Plant the bulbs in this in March or April, water moderately and hasten growth by putting in a warm, light place. When weather has become warm, plunge the pots in the earth out of doors. They will usually flower before cold weather. If they do not, the pots can be brought in and bulbs will bloom in the house.

- Double Dwarf Pearl.** First size bulbs. Each 10c., 10 60c., 100 \$4.50.



DAHLIA FLOWERED ZINNIAS



# Gladiolus

The Gladiolus is one of the most decorative plants in the garden and as a cut flower lends itself readily to any arrangement. If the spikes are cut when the lowest flower is in bloom, the others will open in succession and remain fresh a week or ten days. No flower has gained more rapidly in public favor than the Gladiolus; this could not well be otherwise, for in addition to the great intrinsic merit of the flower, it is hardy and blooms the first season from bulbs.

**Mrs. Dr. Norton.** Large white flowers, the edges suffused with soft pink. The lower petals have a blotch of sulphur yellow stained with fine specks of pink.

**Anna Eberius.** Dark velvety purple, throat deeper.

**Byron L. Smith.** Beautiful lavender pink on white ground, an orchid shade. Each 10c., doz. \$1.00.

**Carmen Sylva.** One of the best of the white varieties. A pure white except for slight violet markings deep in the throat. Tall, slender stem always straight, flowers well arranged on the spike. Many open. \$7.00.

**E. J. Shaylor.** Tall, beautiful, pure deep rose pink

**Mrs. Francis King.** Brilliant vermilion scarlet. Most popular and effective variety for all occasions. Large size. Each 10c., doz. 90c., 100 \$6.00. Medium size.

**Mrs. Frank Pendleton.** Flushed salmon pink with rich maroon blotch on the three lower petals. The most popular flower in florists' shops.

**Le Marechal Foch.** Rose pink, resembling America in color, but deeper. Blooms same time as the Halley.

**Schwaben.** Clear canary yellow, shading to soft sulphur. Largest flower stalk and leaves of all. Planted 7 or 8 in. apart in rich soil produces wonderful blooms.

**Crimson Glow.** A perfect, very large, deep scarlet crimson flowers on a tall, strong spike.

**Rose Ash (Ashes of Roses).** A new color in Gladiolus. A wonderfully vigorous grower.

**Golden Measure.** Very large, dark golden yellow; the best in the yellows.

**Giant Nymph.** La France pink, with creamy yellow throat; very large, wide open flowers, long spikes and flowers well arranged on the stem. This is without question one of the very best recent introductions. If it is not in your collection, buy it.

Above varieties doz. 70c., 100 \$5.00

## SIX FINE VARIETIES OF RECENT INTRODUCTION

**Lansing.** Big pink, strong, tall grower. A white ground is overlaid with pale sulphur yellow on two side petals, with tips of all petals tinted light flamingo pink. Each 35c., doz. \$3.50, 100 \$25.00.

**Louise.** Orchid lavender with deeper blotch in throat. Wide open flower on strong stem.

**Mrs. Fred C. Peters.** Fine lilac-pink with purplish blotch in throat. Large flowers with long, erect stems.

**Mrs. Leon Douglas.** Ground color Begonia rose, striped with flame and brilliant scarlet. Lip is pale lemon slightly speckled with ruby. The size of the flowers, we believe, is the largest in existence. Each 20c., doz. \$2.00, 100 \$10.00.

**Mr. Mark.** Light blue with darker throat; robust grower.

**W. H. Phipps.** La France pine overlaid with light rose salmon, lighter toward the center. Lower petals very faintly striped and speckled with ruby. Flowers enormous. A masterpiece in Gladiolus. Each 25c., doz. \$2.50, 100 \$18.00.

Above varieties doz. \$1.50, 100 \$10.00



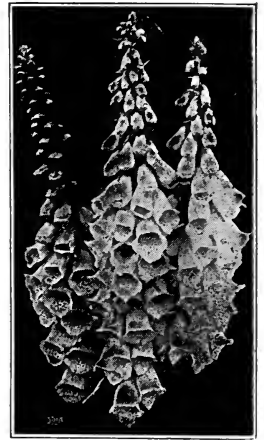
GLADIOLUS



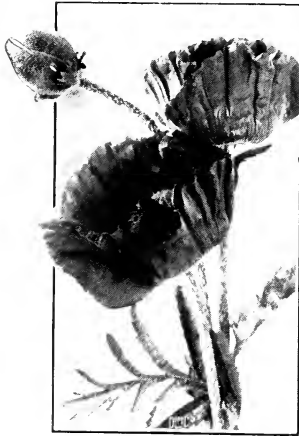
AQUILEGIA, LONG SPURRED HYBRIDS



BELLIS PERENNIS (DOUBLE DAISY)

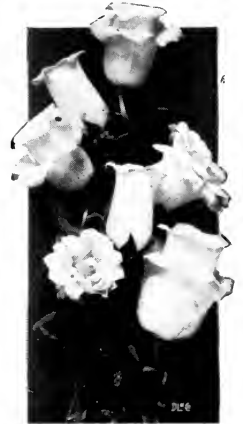


DIGITALIS (GIANT SHIRLEY FOXGLOVE)



ORIENTAL POPPY

*For Prices  
and  
Description  
See  
Page 31*



CAMPANULA MEDIUM (CUP AND SAUCER)



CENTAUREA MONTANA (HARDY CORNFLOWER)



DELPHINIUM, WREXHAM STRAIN (HOLLYHOCK DELPHINIUM)



PYRETHRUM (PAINTED DAISY)

# General List of Hardy Perennial Flower Seeds

(FOR AUTUMN SOWING)

Seeds of perennials should be sown in July or August in coldframes or prepared beds and seedlings transplanted when large enough to handle. Protect with sash or light covering in the Winter.

- ACHILLEA, The Pearl.** Double white. Pkt. 15c.  
**ACONITUM napellus** (Blue Monkshood). Pkt. 15c.  
**AGROSTEMMA coronaria.** Crimson. Pkt. 15c.  
**ALYSSUM saxatile compactum.** Yellow. Pkt. 15c.  
**ANCHUSA italica, Dropmore.** Blue. Pkt. 15c.  
**ANTHEMIS kelwayi.** Yellow. Pkt. 15c.  
**AQUILEGIA, Long Spurred Hybrids.** Pkt. 15c.  
   **chrysantha.** Yellow. Pkt. 15c.  
   **Long Spurred Blue.** Pkt. 15c.  
   **Long Spurred Pink.** Pkt. 15c.  
**ARABIS alpina.** White. Pkt. 15c.  
**AUBRIETIA Hybrids.** Pkt. 15c.  
**BELLIS perennis** (Double Daisy). Prefers a cool, sheltered situation and needs some protection in Winter. Flowers are quilled or flat petaled, white, red or variegated. Half hardy perennial.  
   **monstrosa Rose.** Fine, large, double dark rose flowers. Pkt. 10c.,  $\frac{1}{8}$  oz. 75c.  
   **monstrosa White.** Pure white, large and very double. Pkt. 10c.,  $\frac{1}{8}$  oz. 75c.  
   **monstrosa Red.** Double and unusually large flowers, red shading to rose. Pkt. 20c.,  $\frac{1}{8}$  oz. \$2.00.  
**BAPTISIA australis** (False-indigo). Pkt. 15c.  
**CAMPANULA** (Cup-and-saucer). Blue, White and Pink. Pkt. 15c.  
   **medium, Single.** Blue, white and pink. Pkt. 15c.  
   **persicifolia.** Blue, white. Pkt. 15c.  
**CENTAUREA montana** (Hardy Cornflower). Pkt. 15c.  
**CERASTIUM tomentosum.** White. Pkt. 15c.  
**COWSLIP, Invincible Giant.** Yellow. Pkt. 15c.  
**COREOPSIS lanceolata.** Yellow. Pkt. 15c.  
**DELPHINIUM belladonna.** Light blue. Pkt. 15c.  
   **bellamosa.** Dark blue. Pkt. 15c.  
   **Chinese Butterfly.** Dark blue. Pkt. 15c.  
**Wrexham Strain** (Hollyhock Delphinium). A new race with spire-like spikes. The chief distinguishing features of the Hollyhock Delphiniums are the extraordinary length and the tapering and spire-like shape of the spikes; the indescribably rich and varied tints; the very remarkable extension of the flowering period—many varieties bloom well into August, their resemblance to Hollyhocks. The seed we offer was grown from the introducer's stock seed and is as true to type as is obtainable. Pkt. 50c.  
**DIANTHUS** (Hardy Garden Pink). Mixed. Pkt. 15c.  
**DIGITALIS** (Giant Shirley Foxglove). Mixed. Pkt. 15c.  
   **gloxiniaeflora.** Purple, rose, white. Pkt. 15c.  
**EUPATORIUM ageratoides.** White. Pkt. 15c.  
**GAILLARDIA grandiflora.** Bronze and yellow shades. Pkt. 15c.  
**GEUM, Mrs. Bradshaw.** Double orange, scarlet. Pkt. 15c.  
**GYPHOSIPHILA paniculata.** Double white. Pkt. 15c.  
**HELENIUM superbum.** Yellow. Pkt. 15c.  
   **Riverton Gem.** Wallflower red. Pkt. 15c.  
**HELIANTHEMUM** (Rockrose). Mixed. Pkt. 15c.  
**HEUCHERA sanguinea** (Coralbells). Pkt. 15c.  
**HIBISCUS** (Giant Marshmallow). Mixed. Pkt. 15c.  
**HOLLYHOCKS, Mixed.** **Newport Pink, Bright Rose, Red, Yellow, White, Black Maroon, Salmon Rose.** Each, pkt. 15c.  
**IBERIS** (Hardy Candytuft). Lilac. Pkt. 15c.  
   **sempervirens.** White. Pkt. 15c.  
**LINUM perenne.** Blue. Pkt. 15c.  
**LUPINUS polyphyllus.** White, blue, rose, mixed. Pkt. 15c.  
**LYCHNIS chalconica.** Scarlet. Pkt. 15c.  
**POPPY, Oriental.** Scarlet. Pkt. 15c.  
   **Perry White.** Pkt. 15c.  
   **Perry Pink.** Pkt. 15c.  
   **Iceland Mixed.** Pkt. 15c.  
**PENTSTEMON barbatus torreyi.** Scarlet. Pkt. 15c.  
**PHYSALIS francheti** (Chinese Lantern Plant). Pkt. 15c.  
**PLATYCODON grandiflora.** Blue, white. Each pkt. 15c.  
**POLEMONIUM caeruleum** (Blue Jacobs-ladder). Pkt. 15c.  
**POLYANTHUS, Giant Mixed.** Pkt. 15c.  
**PRIMULA vulgaris** (English Primrose). Yellow. Pkt. 15c.  
**PYRETHRUM roseum** (Painted Daisy). Pkt. 15c.  
**RUDBECKIA purpurea** (Reddish Purple Coneflower). Pkt. 15c.  
**SALVIA azurea.** Sky blue. Pkt. 15c.  
**STOKESIA** (Cornflower Aster). Blue. Pkt. 15c.  
**SWEET-WILLIAM, Holborn Glory.** Auricula eyed. Pkt. 15c.  
   **Newport Pink, Black Maroon, White, Fancy Mixed.** Each, pkt. 15c.  
**TUNICA saxifraga.** Soft pink. Pkt. 15c.  
**VALERIAN rubra** (Garden Heliotrope). Pkt. 15c.  
**VERONICA spicata.** Blue. Pkt. 15c.

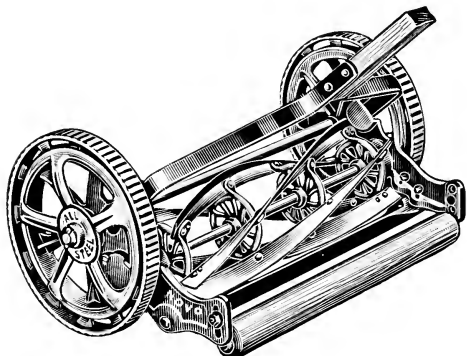
# Tools and Garden Supplies

## LAWN MOWERS, F. & N. All Steel Bearing Self Adjusting.

16 in. ....	\$16.50
18 in. ....	18.50

### Great American

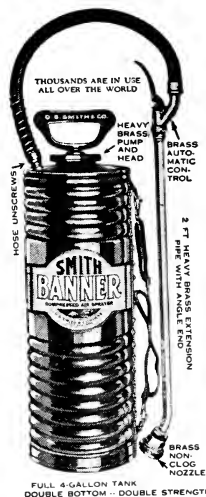
15 in. ....	20.00
17 in. ....	23.00
19 in. ....	25.00



## NOVO

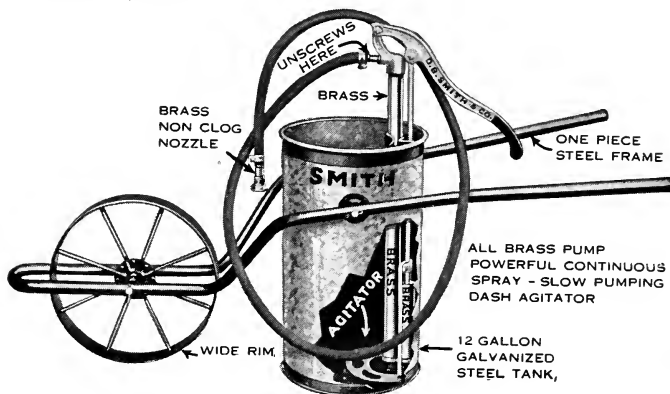
### The Unbreakable Lawn Mower

Guaranteed for a lifetime. 16 in. cut \$16.50; 18 in. cut, \$18.50.



## BANNER No. 22 SPRAYER

This sprayer is adapted for all spraying purposes, whitewashing and disinfecting. Tank 23 in. by 7½ in., capacity full 4 gals. Automatic nozzle for three different sprays. No. 22 Brass tank, \$9.00; Banner Sprayer, Galvanized tank, \$6.50.



## SMITH No. 50 SPRAYER

This Wheelbarrow Sprayer may be used for spraying, whitewashing or for disinfectants. The pump is all brass. Capacity, 12 gal. hose 8 ft. with brass nozzle. Price with galvanized tank, \$20.00.

Hand Sprayers, brass.....\$1.25  
Hand Dusters, Savage Jr..... 1.25

WOOD LAWN RAKES..... 1.40

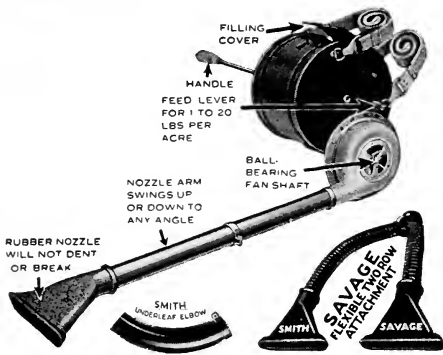
### STEEL GARDEN RAKES

6 tooth.....	1.00
8 tooth.....	1.25
10 tooth.....	1.30
12 tooth.....	1.35
14 tooth.....	1.50
16 tooth.....	1.60

BAMBOO RAKES.....	\$1.25
SPADES. Short handle...	1.75
SPADING FORKS. Short handle.....	2.50
SHOVELS. Short handle.....	1.75
Long handle.....	1.75
HOES, Draw or Garden..	1.50
English Scuffle	
4 in.....	1.00
6 in.....	1.25
8 in.....	1.40
10 in.....	1.70
Handles.....	.75
Heart Shape.....	1.50
CULTIVATORS, 3 prong..	1.00

SHEARS, English Border.....	5.50
English Hedge.....	3.50
SCYTHE BLADES, English.....	3.00
Snath or Handle.....	2.00
Stones.....	.35
GRASS HOOKS, English Thin Blade....	.95
TURF EDGERS, Half Moon.....	1.50
GRASS SHEARS, Goodwin.....	Pair 2.00
Regular.....	Pair .75
HAND PRUNERS, Disston's.....	Pair 3.00
Henry's.....	Pair 2.00
LOPPING SHEARS, Clyde's.....	Pair 3.25

SUPPLIES—Continued



**THE SAVAGE DUSTER**

Highly adapted for dusting cotton with calcium arsenate for the control of the boll weevil and for dusting garden vegetables of every description, shrubby, tobacco plants, etc.

Will dust every remedy in powdered form.

Easier to carry and operate than any hand duster made. Perfect balance. Ball bearings and gears packed in grease require no lubrication. Price, \$20.00. Packed weight, 15 lbs.

**POLE PRUNERS**

8 ft.....	\$2.00
10 ft.....	2.25
12 ft.....	2.50

<b>PRUNING SAWS, York State.....</b>	2.25
Paragon.....	2.00
Double Edge.....	1.50

<b>GARDEN BARROW.....</b>	10.50
---------------------------	-------

**WATERING POTS, French Oval Pattern.**

6 qt.....	6.25
8 qt.....	6.50
10 qt.....	7.00
12 qt.....	7.75

<b>HOTBED MATS.</b> Duck on one side, burlap on other; 76x76.....	4.50
---	------

<b>RUBBER GARDEN HOSE.</b> 3/4 in. crack-proof, coupled in 25 ft. lengths and 50 ft. lengths.....Per ft.	.18
--	-----

- GARDEN STAKES            JUTE TWINE
- BAMBOO CANES           BINDER TWINE
- RAFFIA                    PLANT TUBS
- FLOWER POTS and PANS
- FLORISTS FLATS
- POT and GARDEN LABELS
- BIRD and PET SUPPLIES
- POTTERY PANS and VASES
- BIRD BATHS and GARDEN VASES

**Prices on application**

The above supplies and many others are carried in stock at all times.

**Insect Destroyers and Fungicides**



**Antrol**

**ANTROL.** For controlling ants. Sets containing 4 jars and 4 oz. bottle of syrup \$1.00. Extra jars, each 15c. 4 oz. bottle 50c. Pint bottle \$1.00.

**APHINE.** Contact insecticide. For soft-bodied and sucking insects. Gal. \$3.00.

**ARSENATE OF LEAD, Dry.** Lb. 50c., 4 lbs. \$1.75, case of 48 lbs. \$14.50.

**APHISTROGEN.** Kills aphid (plant lice). A scientific aphicide, perfected by Rose specialists that quickly rid your plants of aphid, the destructive tiny green or pink soft-bodied insects, commonly called plant lice, found on the tender branches and foliage—weakening the plant and carrying disease. 2 ozs. 50c., 1/2 lb. \$1.25, lb. \$2.25, 2 lbs. \$3.50.

**"BLACK LEAF 40."** 1 oz. bottle 35c., 5 oz. bottle \$1.00, 1 lb. bottle \$2.50. 2 lb. tin \$3.75, 5 lb. tin \$7.00, 10 lb. tin \$11.85.



**BORDEAUX MIXTURE, Dry.** Lb. 40c., 4 lbs. \$1.50, case of 48 lbs. \$10.00.

**CROW REPELLENT.** For treatment of Corn against crows. 1/2 pt. can \$1.00, sufficient for treatment of 2 bushels of Corn.

**CYANOGAS, G.** Greenhouse fumigant, 5 lbs. \$3.00.

**A.** For the destruction of ground moles and other rodents. 1/2 lb. 50c., lb. 75c.

**EVER GREEN.** A non-poisonous insecticide. A very effective spray for all kinds of insects. Harmless to animals or birds. Recommended for the Japanese Beetle. One pound makes 100 gals. spray. 1 oz. 35c., 6 ozs. \$1.00, 1 lb. \$2.00, 2 lbs. \$3.85, gal. \$13.00.

**FISH OIL SOAP.** Lb. 50c.

## INSECT DESTROYERS AND FUNGICIDES—Continued



**FUNGTROGEN.** Highly concentrated fungicide for control of mildew and black spot on Roses. Pt. \$1.25, qt. \$2.00, gal. \$6.00.

**GRAPE DUST.** Powder preparation, for mildew. 5 lbs. \$1.00.

**HELLEBORE.** Pure white. Lb. 60c.

**INSECTROGEN.** Kills most leaf eating insects. A highly effective insecticide for leaf eating insects including caterpillars, slug worms, Japanese beetles, etc., and has definite fungicidal value for black spot on Roses. An effective destroyer of leaf tier on Chrysanthemums grown under glass, etc. 4 ozs. 60c., ½ pt. \$1.00, pt. \$1.75, qt. \$2.75.

**KAYSO.** Adhesive and spreader for mixing with spraying materials. 2 lbs. 75c.; sufficient for 200 gals.

**LIME SULPHUR, Dry.** Lb. 45c., 5 lbs. \$1.50, 10 lbs. \$2.75, 25 lbs. \$5.00.



**MEXOGEN.** Kills and repels Mexican bean beetles. Proven and highly endorsed. Qt. \$2.00.

## MOLOGEN

(Trade Mark)

### MOLE KILLER

**MOLOGEN (Trade Mark) MOLE KILLER.**

Eliminates moles from your lawn within two or three days! Non-poisonous to humans and pets. ½ lb. can 50c., 5 lb. can \$4.00, 1½ lb. can \$1.25.

**NICOFUME PAPERS.** 144 sheets to box \$5.00, 288 sheets to box \$8.75.

**NICOFUME TOBACCO POWDER FUMIGATOR.** 5 lb. tin \$3.75, 10 lb. tin \$6.85.

**PARACIDE.** For control of Peach tree borers. Lb. 75c.

**PYROX.** Lb. 50c., 5 lbs. \$1.75, 10 lbs. \$3.00, 25 lbs. \$6.25.

**READ'S ANTISEPTIC ANIMAL SOAP LIQUID or CREAM.** 50c. each.

**READE'S ELECTRIC WORM ERADICATOR (Liquid).** One gallon is diluted with from 200 to 250 parts of water, and the turf thoroughly drenched with the diluted liquid. Four gallons of concentrated material is the average allowance per golf putting-green. Gal. \$5.00, 5 gals. \$17.50, 10 gals. \$30.00, 50 gals. \$150.00.

**SCALECIDE.** The dormant spray. Qt. 75c., gal. \$1.75, 5 gals. \$6.25.

**SEMESAN.** See bulb and soil disinfectant. 2 ozs. 50c., lb. \$2.75.

**SLUG SHOT.** Lb. 25c., 5 lbs. 70c., 10 lbs. \$1.25.

**SNAROL.** An insecticide bait to combat snails, cut worms, sow bugs and grasshoppers. Lb. 50c., 3 lbs. \$1.00, 15 lbs. \$3.75.



**STIMUGERM INOCULANT.** For Sweet Peas and garden Peas. ½ bus. size 35c.

**SULPHUR.** For dusting. Lb. 15c., 5 lbs. 50c., 10 lbs. 75c.

**TOBACCO DUST.** For dusting. Lb. 15c., 5 lbs. 50c., 25 lbs. \$2.00.

**TREE TANGLEFOOT.** A paste preparation to prevent caterpillars and other crawling pests from climbing trees. Lb. 60c., 5 lbs. \$2.75, 10 lbs. \$5.25.

**TREE WOUND PAINT.** Antiseptic paint for tree wounds and new cuts. Qt. \$1.00, gal. \$3.00.

**VERMINE.** For destroying grubs, worms, slugs, maggots and root lice working in the soil. Qt. \$1.25, gal. \$3.00.

**VOLCK.** A spray for scale, mealy bug and red spider. Qt. \$1.00, gal. \$3.00, 5 gals. \$12.50.

**WILSON'S O. K. PLANT SPRAY.** Qt. \$1.00, gal. \$3.00, 5 gals. \$12.00.

**X-L-ALL LIQUID INSECTICIDE.** Qt. \$2.00, gal. \$7.00.

## WEED KILLERS

**HERBICIDE.** For killing weeds in gutters, drives and paths. Qt. 70c., gal. \$2.00, 5 gals. \$7.50.

# FERTILIZERS

*Feed Your Plants and See Them Grow!*

**Note regarding Fertilizers for Season 1932.** Owing to the extreme fluctuations on the prices of all fertilizer materials, we quote below prices at which we expect to be able to supply them. These prices are not binding, but are given as a guide only. We have prepared for the season's requirements, and have liberal stocks of materials, on which we will be glad to quote lowest market values on application.

**STEAMED BONE.** 100 lbs. \$3.75.

**ADCO.** A preparation for converting waste garden materials into artificial manure. 25 lbs. \$2.25, 150 lbs. \$10.50.

**BONEMEAL.** Pure ground bone of highest quality. 5 lbs. 50c., 10 lbs. 75c., 25 lbs. \$1.25, 100 lbs. \$4.00.

**MARKET GARDEN FERTILIZER.** For general use on Potatoes, Corn and all truck crops; a balanced food for general use. 5 lbs. 50c., 10 lbs. 75c., 25 lbs. \$1.00, 100 lbs. \$3.00.

**SHEEP AND GOAT MANURE.** 5 lbs. 50c., 10 lbs. 75c., 25 lbs. \$1.25, 100 lbs. \$3.50.

**LOMA.** A scientifically prepared plant food for lawns, shrubbery, potted plants, flower gardens, vegetable gardens, trees. 5 lb. can 60c., 10 lb. bag \$1.00, 25 lb. bag \$2.00, 50 lb. bag \$3.75, 100 lb. bag \$6.00.

**CLAY'S LONDON FERTILIZER.** Highly recommended for greenhouse use. 56 lb. bag \$7.00.

**GROUND LIME STONE.** 100 lbs. \$1.25, ton \$15.00.

**LIME, Hydrated.** To correct acid conditions of soil; quick action. 50 lb. bag \$1.25, ton \$35.00.

**NITRATE OF SODA.** Lb. 25c., 5 lbs. 75c., 100 lbs. \$6.00, ton \$80.00.

**MURIATE OF POTASH.** 5 lbs. \$1.00, 25 lbs. \$2.50, 100 lbs. \$7.00.

**SULPHATE OF AMMONIA.** 5 lbs. \$1.00, 100 lbs. \$7.00.

**SALT, Agricultural.** For dressing Asparagus beds and killing weeds on unplanted ground. 100 lbs. \$3.00.

**SCOTCH SOOT.** 112 lb. bag \$7.00.

**STIM-U-PLANT TABLETS.** Plant food in tablet form for house plants and outside garden plants. Box of 30 tablets 25c., box 100 tablets 75c., pail of 1000 \$3.50.

**PEAT FIBER, Granulated.** Used for top dressing evergreens and for a Summer or Winter mulch for plants. Large bale \$5.00, lots of 5 bales \$4.00 per bale.



**YOU NEED THIS GARDEN TOOL!** Every home owner needs a *Vigoro Spreader* to make his gardening more successful. Grass seed must be sown evenly—plant food applied at a uniform rate, and then there are sand and salt as well as insecticides to be distributed at various times. Add one to your order. Standard, 2 ft. spread, 65 lb. cap, \$10.45.

## Bird and Fish Supplies



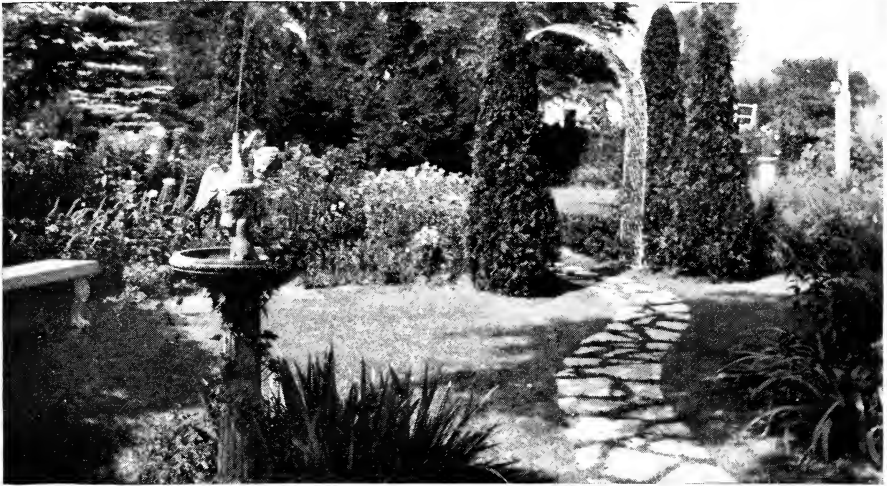
**BURNETT'S BIRD FOOD.** A health food and song restorer. This preparation, made by Burnett's for over 35 years is the acme of perfection in prepared foods. Its value as a food is more than just sustenance. The ingredients not only act to satisfy hunger, but also keeps the blood in good condition, strengthens the body, and enriches the voice. It can be used for young birds as well as old. Feed Unexcelled Bird Food daily (about a teaspoonful to each bird). Bottle 25c.



**BURNETT'S LIGHTNING REGULATOR.** An excellent natural food for keeping birds bright and active. It contains seed that birds in their natural haunts relish. Lightning Regulator is an ideal condition food for birds that are ailing. It is especially recommended during the moulting and breeding seasons. Feed an egg-food-cupful daily. Bottle 25c.

- BURNETT'S NATURAL FISH FOOD** . . . Pkt. 10c.
- BURNETT'S WAFER FISH FOOD** . . . Pkt. 10c.
- CANARY SEED** . . . Lb. box 20c.
- BIRD GRAVEL** . . . 36 oz. box 15c.

- CUTTLE FISH BONE** . . . Pkt. 10c.
- BIRD TONIC** . . . Bottle 20c.
- BIRD WASH** . . . Bottle 25c.
- BURNETT'S BIRD PEP** . . . Pkt. 15c.
- WILD BIRD SEED** . . . Lb. 20c., 10 lbs. \$1.50



## For Gardening Success

**T**HE best seeds and plants will not produce good results if grown in an impoverished soil. Be sure your plants get all the nourishment they need for full growth and greatest beauty. Feed them with Vigoro, the complete, scientifically balanced plant food.

Vigoro produces thick, velvety-green lawns with deep, extensive roots; helps choke out weeds; and increases humus in the soil.

It makes flowers larger and more beautiful; produces early, delicious vegetables, luxuriant shrubbery, and healthy, full-foliaged trees. Vigoro is clean, odorless, and easy to use. It's

economical, too! Costs only 10¢ to 20¢ for every 100 square feet.

Order enough Vigoro for every-thing you grow.



1

Read simple directions



2

Apply Vigoro evenly



3

Wet down thoroughly

Complete directions in every bag.

### Prices

100 lb. bag..	\$6.00
50 lb. bag.....	3.75
25 lb. bag.....	2.00
5 lb. pkg.....	.60

# VIGORO

Complete plant food

A product of Swift & Company

For Lawns, Gardens, Flowers, Shrubby, and Trees







The Asters illustrated here are annuals of the late flowering variety coming into bloom late in August and early September. They are fine for cut flowers and stay in bloom until the middle of October. You will find prices listed on the inside pages.



The long spurred hybrid Aquilegia are among the first perennials to flower. In beautifying a rock garden or perennial border, there is no flower that surpasses them. As cut flowers, they are excellent and their early blooming makes them indispensable to your garden. Prices are to be found inside this cover.



*William J. Rice*

*578 Main Street*

*Stamford, Conn.*